



# **Eltex.ACS**

## **Northbound interface - RESTAPI**

---

**NBI REST API Guide**

**Version: 1.0**

## TARGET AUDIENCE

This guide is intended for technical personnel that performs **ELTEX.ACS** server integration with any other management system that capable of creating **REST** requests. Qualified technical personnel should be familiar with the operation basics of **TCP/IP** protocol stacks and **REST** requests technique. **TR-069** protocol specification knowledge is mandatory requirement.

## SYMBOLS

| Symbol                | Description   |
|-----------------------|---|
| <b>Bold font face</b> | Notes, warnings, section headings, titles and table titles are written in bold.                           |
| <i>Calibri Italic</i> | Important information is written in Calibri Italic.   |
| Courier New           | Command entry examples, command execution results and program output are written in Courier New semibold. |
| <KEY>                 | Keyboard keys are written in upper-case and enclosed in angle brackets.                                   |

## NOTES AND WARNINGS



Notes contain important information, tips, or recommendations on device operation and setup.



Warnings inform users about hazardous conditions which may cause injuries or device damage and may lead to the device malfunctioning or data loss.

## CONTENTS

|      |   |    |
|------|---|----|
| 1    | ACS architecture description .....                            | 7  |
| 1.1  | Structure .....   | 7  |
| 1.2  | Communication organization chart .....                        | 8  |
| 1.3  | Summary of CPE Interaction with ACS Server .....              | 9  |
| 2    | INSTALLATION AND CONFIGURATION .....                          | 11 |
| 2.1  | Installation .....  | 11 |
| 2.2  | Connecting to NBI, getting a list of requests .....           | 11 |
| 2.3  | Request authentication/authorization .....                    | 11 |
| 3    | NBI REST API Guide .....                                      | 13 |
| 3.1  | /AcsNbiService/AddCpeParam .....                              | 13 |
| 3.2  | /AcsNbiService/DeleteCpeParam .....                           | 13 |
| 3.3  | /AcsNbiService/DeviceAdd .....                                | 13 |
| 3.4  | /AcsNbiService/DeviceAddNew .....                             | 13 |
| 3.5  | /AcsNbiService/DeviceAddService .....                         | 14 |
| 3.6  | /AcsNbiService/DeviceDelete .....                             | 14 |
| 3.7  | /AcsNbiService/DeviceDeleteAllCommands .....                  | 14 |
| 3.8  | /AcsNbiService/DeviceDeleteAllIpPingDiagnosticsCommands ..... | 14 |
| 3.9  | /AcsNbiService/DeviceDeleteAllProperties .....                | 14 |
| 3.10 | /AcsNbiService/DeviceDeleteAllServices .....                  | 15 |
| 3.11 | /AcsNbiService/DeviceDeleteByFilter .....                     | 15 |
| 3.12 | /AcsNbiService/DeviceDeleteCommand .....                      | 15 |
| 3.13 | /AcsNbiService/DeviceDeleteIpPingDiagnosticsCommand .....     | 15 |
| 3.14 | /AcsNbiService/DeviceDeleteList .....                         | 15 |
| 3.15 | /AcsNbiService/DeviceDeleteOptions .....                      | 15 |
| 3.16 | /AcsNbiService/DeviceDeletePersonalFirmware .....             | 16 |
| 3.17 | /AcsNbiService/DeviceDeleteProperty .....                     | 16 |
| 3.18 | /AcsNbiService/DeviceDeleteService .....                      | 16 |
| 3.19 | /AcsNbiService/DeviceGetAvailableProfiles .....               | 16 |
| 3.20 | /AcsNbiService/DeviceGetAvailableServices .....               | 16 |
| 3.21 | /AcsNbiService/DeviceGetAvailableShortPropertyNames .....     | 17 |
| 3.22 | /AcsNbiService/DeviceGetBySerial .....                        | 17 |
| 3.23 | /AcsNbiService/DeviceGetCommandRequestAnswer .....            | 17 |
| 3.24 | /AcsNbiService/DeviceGetCommandState .....                    | 17 |
| 3.25 | /AcsNbiService/DeviceGetCount .....                           | 17 |
| 3.26 | /AcsNbiService/DeviceGetCountByHardwareClass .....            | 17 |
| 3.27 | /AcsNbiService/DeviceGetFilteredCountByHardwareClass .....    | 17 |
| 3.28 | /AcsNbiService/DeviceGetGroupsList .....                      | 18 |
| 3.29 | /AcsNbiService/DeviceGetIpPingDiagnosticsCommandList .....    | 18 |
| 3.30 | /AcsNbiService/DeviceGetIpPingDiagnosticsInfo .....           | 18 |
| 3.31 | /AcsNbiService/DeviceGetItem .....                            | 18 |
| 3.32 | /AcsNbiService/DeviceGetListByClause .....                    | 18 |
| 3.33 | /AcsNbiService/DeviceGetListByHardware .....                  | 18 |
| 3.34 | /AcsNbiService/DeviceGetListByHardwareClass .....             | 19 |
| 3.35 | /AcsNbiService/DeviceGetListByIP .....                        | 19 |
| 3.36 | /AcsNbiService/DeviceGetListByParamsWithAND .....             | 19 |
| 3.37 | /AcsNbiService/DeviceGetListByParamsWithOR .....              | 19 |
| 3.38 | /AcsNbiService/DeviceGetManagementParams .....                | 19 |
| 3.39 | /AcsNbiService/DeviceGetOptionList .....                      | 19 |

|      |   |    |
|------|---|----|
| 3.40 | /AcsNbiService/DeviceGetPageList .....                          | 20 |
| 3.41 | /AcsNbiService/DeviceGetProperty .....                          | 20 |
| 3.42 | /AcsNbiService/DeviceGetPropertyList .....                      | 20 |
| 3.43 | /AcsNbiService/DeviceGetSerialsByPersonalFirmware .....         | 20 |
| 3.44 | /AcsNbiService/DeviceGetSerialsByPersonalFirmwareAddQuery ..... | 20 |
| 3.45 | /AcsNbiService/DeviceGetServicesList .....                      | 20 |
| 3.46 | /AcsNbiService/DeviceReplaceToGroup .....                       | 21 |
| 3.47 | /AcsNbiService/DeviceReplaceToGroupByCriteria .....             | 21 |
| 3.48 | /AcsNbiService/DeviceSendCommandAddObject .....                 | 21 |
| 3.49 | /AcsNbiService/DeviceSendCommandDeleteObject .....              | 21 |
| 3.50 | /AcsNbiService/DeviceSendCommandDownloadFirmware .....          | 22 |
| 3.51 | /AcsNbiService/DeviceSendCommandDownloadFirmwareRemote .....    | 22 |
| 3.52 | /AcsNbiService/DeviceSendCommandGetParamNames .....             | 22 |
| 3.53 | /AcsNbiService/DeviceSendCommandGetParamValueList .....         | 22 |
| 3.54 | /AcsNbiService/DeviceSendCommandSetParamValueList .....         | 23 |
| 3.55 | /AcsNbiService/DeviceSendCommandUpgrade .....                   | 23 |
| 3.56 | /AcsNbiService/DeviceSendCommandUploadDeviceLogs .....          | 23 |
| 3.57 | /AcsNbiService/DeviceSendCommandUploadScreenshot .....          | 23 |
| 3.58 | /AcsNbiService/DeviceSendIpPingDiagnostics .....                | 24 |
| 3.59 | /AcsNbiService/DeviceSendReboot .....                           | 24 |
| 3.60 | /AcsNbiService/DeviceSendReconfigure .....                      | 24 |
| 3.61 | /AcsNbiService/DeviceSendResetToDefault .....                   | 24 |
| 3.62 | /AcsNbiService/DeviceSendSetPassword .....                      | 25 |
| 3.63 | /AcsNbiService/DeviceSendWakeOnLan .....                        | 25 |
| 3.64 | /AcsNbiService/DeviceSetDtOptionList .....                      | 25 |
| 3.65 | /AcsNbiService/DeviceSetIntOptionList .....                     | 25 |
| 3.66 | /AcsNbiService/DeviceSetLongOptionList .....                    | 25 |
| 3.67 | /AcsNbiService/DeviceSetManagementParams .....                  | 26 |
| 3.68 | /AcsNbiService/DeviceSetPersonalFirmware .....                  | 26 |
| 3.69 | /AcsNbiService/DeviceSetProfile .....                           | 26 |
| 3.70 | /AcsNbiService/DeviceSetProperty .....                          | 26 |
| 3.71 | /AcsNbiService/DeviceSetPropertyList .....                      | 27 |
| 3.72 | /AcsNbiService/DeviceSetStrOptionList .....                     | 27 |
| 3.73 | /AcsNbiService/DeviceSetTxtOptionList .....                     | 27 |
| 3.74 | /AcsNbiService/DeviceUpdate .....                               | 27 |
| 3.75 | /AcsNbiService/DevicesGetOptionList .....                       | 27 |
| 3.76 | /AcsNbiService/DevicesGetOptionListByNames .....                | 28 |
| 3.77 | /AcsNbiService/EventsAddSubscribe .....                         | 28 |
| 3.78 | /AcsNbiService/EventsDeleteSubscribe .....                      | 28 |
| 3.79 | /AcsNbiService/EventsGetFilterList .....                        | 28 |
| 3.80 | /AcsNbiService/EventsGetList .....                              | 28 |
| 3.81 | /AcsNbiService/EventsGetSubscriptionListByURL .....             | 28 |
| 3.82 | /AcsNbiService/FileDelete .....                                 | 28 |
| 3.83 | /AcsNbiService/FileGetContent .....                             | 29 |
| 3.84 | /AcsNbiService/FileGetList .....                                | 29 |
| 3.85 | /AcsNbiService/FileGetListAddQuery .....                        | 29 |
| 3.86 | /AcsNbiService/FilePathGetLink .....                            | 29 |
| 3.87 | /AcsNbiService/FileUpload .....                                 | 29 |
| 3.88 | /AcsNbiService/FileUploadByClientIP .....                       | 29 |
| 3.89 | /AcsNbiService/FirmwareAddRule .....                            | 30 |

|       |   |    |
|-------|---|----|
| 3.90  | /AcsNbiService/FirmwareAssociateWithHardware.....           | 30 |
| 3.91  | /AcsNbiService/FirmwareAssociateWithProfile .....           | 30 |
| 3.92  | /AcsNbiService/FirmwareDeleteRule.....                      | 30 |
| 3.93  | /AcsNbiService/FirmwareDisassociateWithHardware .....       | 31 |
| 3.94  | /AcsNbiService/FirmwareDisassociateWithProfile .....        | 31 |
| 3.95  | /AcsNbiService/FirmwareGetAssociateList .....               | 31 |
| 3.96  | /AcsNbiService/FirmwareGetChangeCounter.....                | 31 |
| 3.97  | /AcsNbiService/FirmwareGetFileListByHardware.....           | 31 |
| 3.98  | /AcsNbiService/FirmwareGetFileListByProfile .....           | 31 |
| 3.99  | /AcsNbiService/FirmwareGetRuleList .....                    | 32 |
| 3.100 | /AcsNbiService/FirmwareGetScheduleList.....                 | 32 |
| 3.101 | /AcsNbiService/FirmwareLinksGetChangeCounter.....           | 32 |
| 3.102 | /AcsNbiService/FirmwareSaveSchedule .....                   | 32 |
| 3.103 | /AcsNbiService/FirmwareSetHardwareAssociateList.....        | 32 |
| 3.104 | /AcsNbiService/FirmwareSetProfileAssociateList .....        | 32 |
| 3.105 | /AcsNbiService/FirmwareUpdateRule .....                     | 33 |
| 3.106 | /AcsNbiService/GetAcsStatistics .....                       | 33 |
| 3.107 | /AcsNbiService/GetAcsVersion .....                          | 33 |
| 3.108 | /AcsNbiService/GetCpeParam .....                            | 33 |
| 3.109 | /AcsNbiService/GetCpeParamList.....                         | 33 |
| 3.110 | /AcsNbiService/GetServerInfo .....                          | 33 |
| 3.111 | /AcsNbiService/GetVersion .....                             | 33 |
| 3.112 | /AcsNbiService/GroupAdd .....                               | 34 |
| 3.113 | /AcsNbiService/GroupAddDevice .....                         | 34 |
| 3.114 | /AcsNbiService/GroupAddDeviceByCriteria.....                | 34 |
| 3.115 | /AcsNbiService/GroupConvertFromProfile .....                | 34 |
| 3.116 | /AcsNbiService/GroupCriteriaGetList .....                   | 34 |
| 3.117 | /AcsNbiService/GroupDelete .....                            | 35 |
| 3.118 | /AcsNbiService/GroupDeleteAllDevices.....                   | 35 |
| 3.119 | /AcsNbiService/GroupDeleteDevice .....                      | 35 |
| 3.120 | /AcsNbiService/GroupDeleteDeviceByCriteria.....             | 35 |
| 3.121 | /AcsNbiService/GroupDeletePersonalFirmware.....             | 35 |
| 3.122 | /AcsNbiService/GroupGetCommandState .....                   | 36 |
| 3.123 | /AcsNbiService/GroupGetDevicesList .....                    | 36 |
| 3.124 | /AcsNbiService/GroupGetList .....                           | 36 |
| 3.125 | /AcsNbiService/GroupSendCommandDownloadFirmware.....        | 36 |
| 3.126 | /AcsNbiService/GroupSendCommandDownloadFirmwareRemote ..... | 36 |
| 3.127 | /AcsNbiService/GroupSendCommandSetParamЗначениеList .....   | 36 |
| 3.128 | /AcsNbiService/GroupSendCommandUpgrade .....                | 37 |
| 3.129 | /AcsNbiService/GroupSendReboot .....                        | 37 |
| 3.130 | /AcsNbiService/GroupSendReconfigure .....                   | 37 |
| 3.131 | /AcsNbiService/GroupSendResetToDefault.....                 | 37 |
| 3.132 | /AcsNbiService/GroupSendSetPassword .....                   | 37 |
| 3.133 | /AcsNbiService/GroupSendUploadConfig.....                   | 37 |
| 3.134 | /AcsNbiService/GroupSetParentGroup.....                     | 38 |
| 3.135 | /AcsNbiService/GroupSetPersonalFirmware .....               | 38 |
| 3.136 | /AcsNbiService/HardwareClassGetList.....                    | 38 |
| 3.137 | /AcsNbiService/HardwareNamesGetListByHardwareClass.....     | 38 |
| 3.138 | /AcsNbiService/LongQueryGetFileInfoResponce.....            | 38 |
| 3.139 | /AcsNbiService/LongQueryGetResponce.....                    | 38 |

|       |  |    |
|-------|--|----|
| 3.140 | /AcsNbiService/LongQueryGetStringsResponce .....       | 38 |
| 3.141 | /AcsNbiService/LongQueryGetValueStatsResponce .....    | 39 |
| 3.142 | /AcsNbiService/ManufacturerOUIGetList .....            | 39 |
| 3.143 | /AcsNbiService/OptionGetValueStats .....               | 39 |
| 3.144 | /AcsNbiService/OptionGetValueStatsAddQuery .....       | 39 |
| 3.145 | /AcsNbiService/ProductClassGetListByHardwareClass..... | 39 |
| 3.146 | /AcsNbiService/ProductClassGetListByOUI .....          | 39 |
| 3.147 | /AcsNbiService/ProfileAdd .....                        | 40 |
| 3.148 | /AcsNbiService/ProfileAddDevices .....                 | 40 |
| 3.149 | /AcsNbiService/ProfileAddDevicesByFilter.....          | 40 |
| 3.150 | /AcsNbiService/ProfileAddDevicesByFilterAddQuery.....  | 40 |
| 3.151 | /AcsNbiService/ProfileDelete .....                     | 40 |
| 3.152 | /AcsNbiService/ProfileDeleteAllProperties .....        | 41 |
| 3.153 | /AcsNbiService/ProfileDeleteProperty .....             | 41 |
| 3.154 | /AcsNbiService/ProfileEdit .....                       | 41 |
| 3.155 | /AcsNbiService/ProfileGetByName .....                  | 41 |
| 3.156 | /AcsNbiService/ProfileGetChangeCounter .....           | 41 |
| 3.157 | /AcsNbiService/ProfileGetListByHardwareClass.....      | 41 |
| 3.158 | /AcsNbiService/ProfileGetProperty.....                 | 42 |
| 3.159 | /AcsNbiService/ProfilePropertyGetChangeCounter .....   | 42 |
| 3.160 | /AcsNbiService/ProfileSendRefreshCache.....            | 42 |
| 3.161 | /AcsNbiService/ProfileSetBaseProfile .....             | 42 |
| 3.162 | /AcsNbiService/ProfileSetDevices .....                 | 42 |
| 3.163 | /AcsNbiService/ProfileSetProperty .....                | 42 |
| 3.164 | /AcsNbiService/ProfileSetPropertyList .....            | 43 |
| 3.165 | /AcsNbiService/ServiceAdd .....                        | 43 |
| 3.166 | /AcsNbiService/ServiceDelete .....                     | 43 |
| 3.167 | /AcsNbiService/ServiceDeleteAllProperties .....        | 43 |
| 3.168 | /AcsNbiService/ServiceDeleteProperty .....             | 43 |
| 3.169 | /AcsNbiService/ServiceGetProperty .....                | 43 |
| 3.170 | /AcsNbiService/ServiceGetPropertyList .....            | 44 |
| 3.171 | /AcsNbiService/ServiceSetProperty .....                | 44 |
| 3.172 | /AcsNbiService/ServiceSetPropertyList .....            | 44 |
| 4     | STRUCTURE DESCRIPTION .....                            | 45 |

---

## 1 ACS architecture description

### 1.1 Structure

**TR-069** (technical report 069) – one of specifications that describes **CWMP** (CPE WAN management protocol), where:

- **CPE** (customer premises equipment) – equipment that installed on the subscriber/client side;
- **WAN** (wide area network) – provider/operator network through which the connection between devices is establishing.

**CWMP** is intended for remote management of subscriber equipment using global network. Device management through this protocol involves deploying an ACS (Auto-Configuration Server) on provider network of a server or a cluster of dedicated servers.

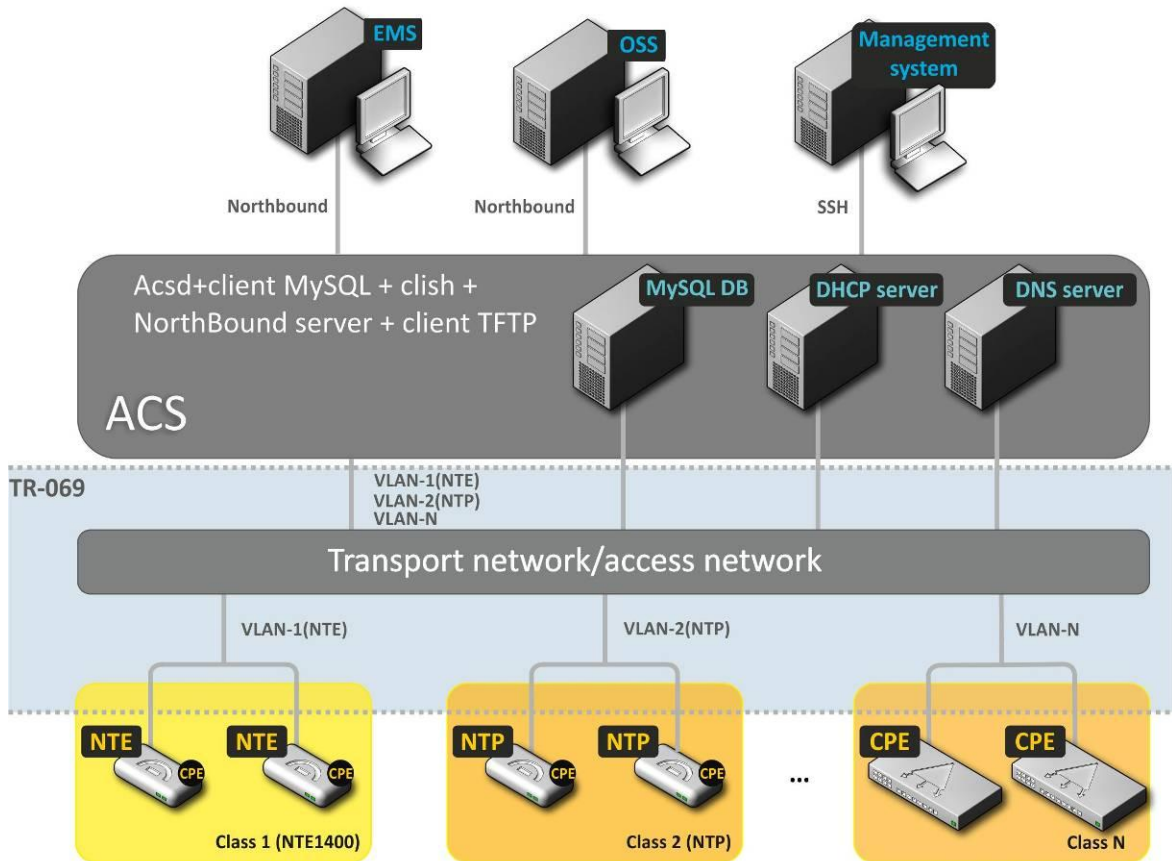
**Eltex.ACS** – **Eltex** company autoconfiguration server (ACS – Auto Configuration Server). The server supports **CWMP** and a lot of its specifications including **TR-069**. The **Eltex.ACS** is deployed on the operator/provider network, after which can interact with subscriber equipment, performs processing of requests from devices and is able to connect additional services. Session can be initiated from both the **CPE** side and the server side.

The **Eltex.ACS** allows you to solve many tasks related to the management of devices on the network, including:

- drivers and microprogramms update;
- equipment and lines state diagnostics;
- changing necessary settings, reboot, etc.

**Northbound Interface (NBI)** – **RESTAPI** for **Eltex.ACS**. The request set is used to exchange arbitrary messages in **JSON** format. Using this requests, you can send required commands to the server, which **Eltex.ACS** transmits to **CWRP** and sends them to devices, as well as allows you to manage the server itself.

## 1.2 Communication organization chart



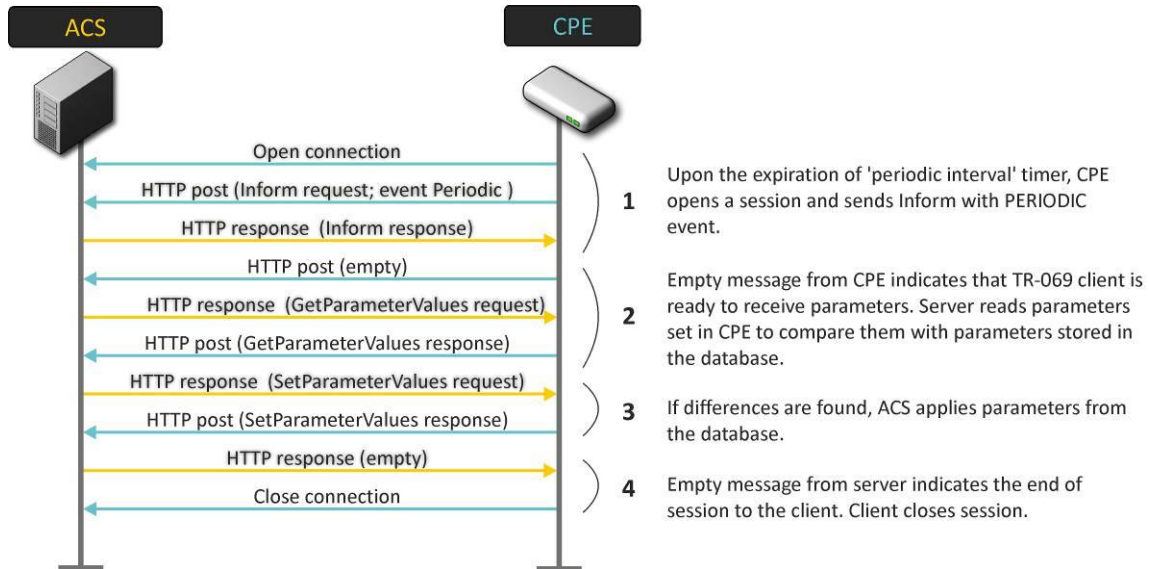
**OSS** - any centralized and automated operation system that can be integrated with **ELTEX.ACS** server via **NBI**.



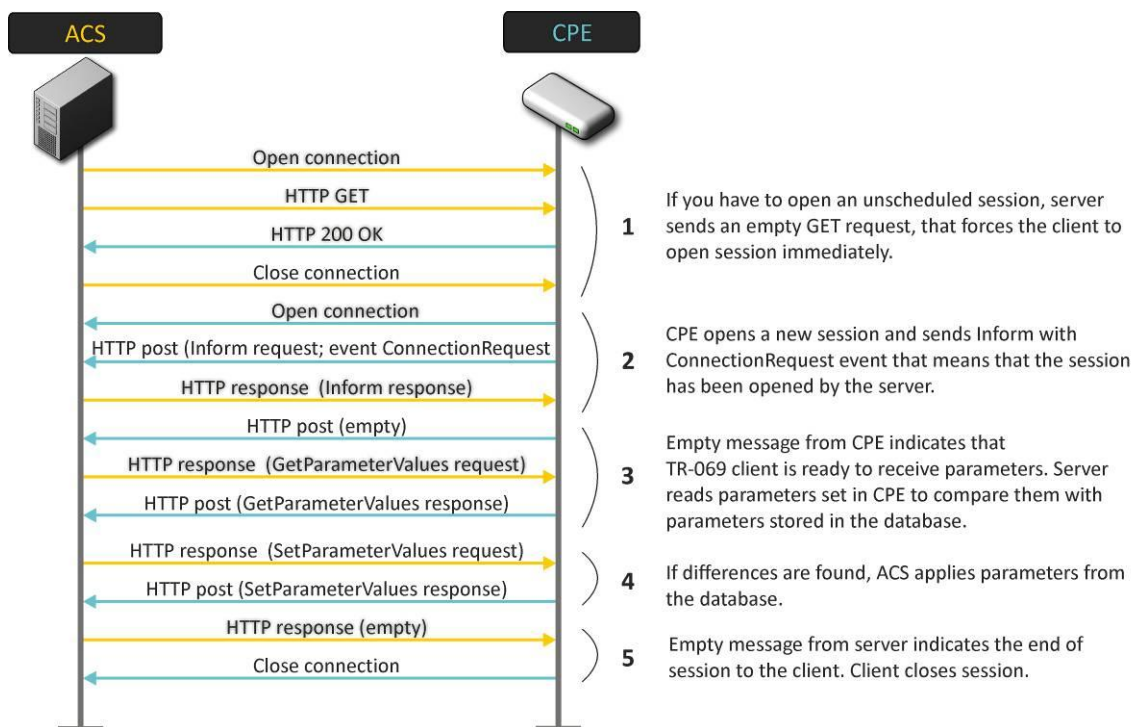
### 1.3 Summary of CPE Interaction with ACS Server

#### 1.3.1 Periodic CPE synchronization with ACS

Periodic CPE and ACS server synchronization will be performed on the inform with the Periodic event. Inform sending frequency is defined by the 'periodic interval' parameter. This interval is configured by the ACS server, as well as other parameters.

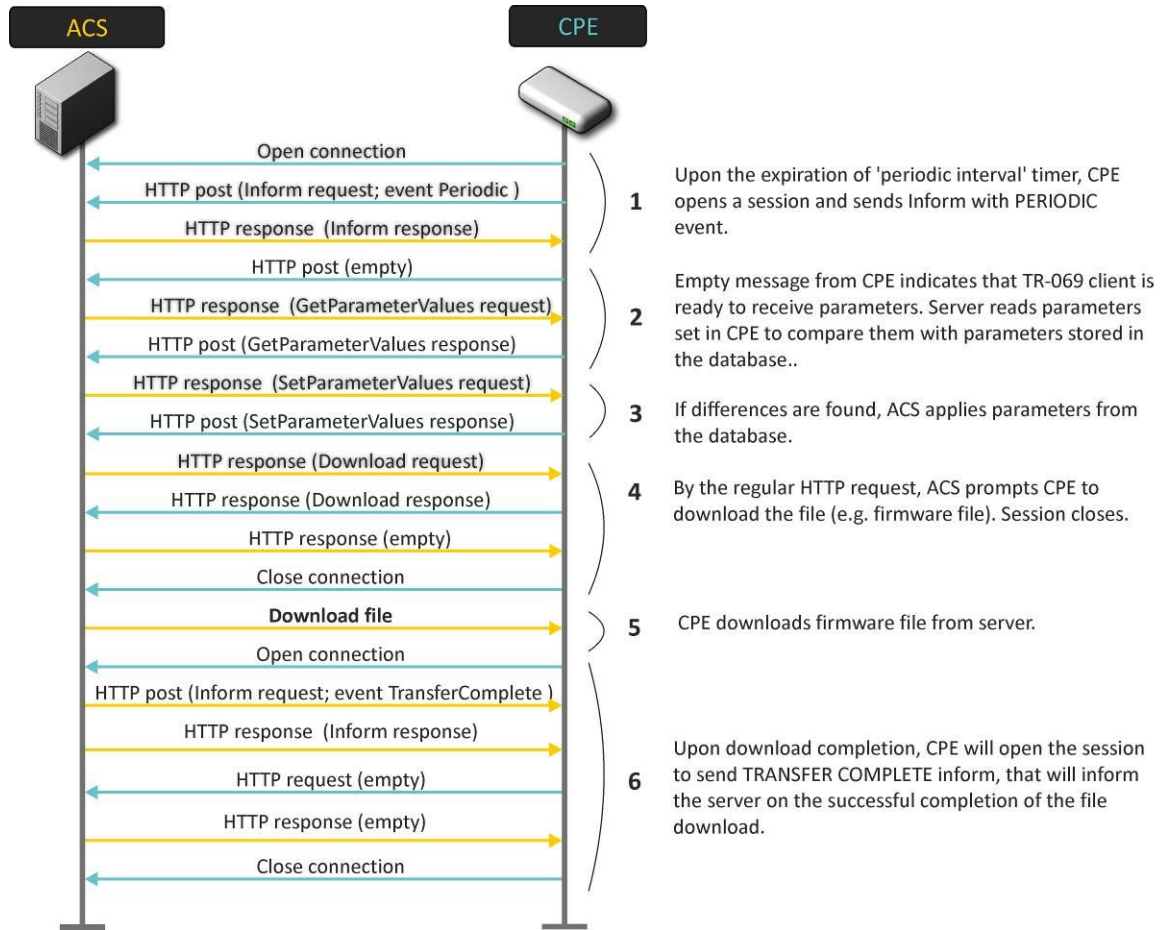


#### 1.3.2 Unscheduled CPE synchronization with ACS



### 1.3.3 CPE firmware update

Firmware update may be performed either on the Periodic event (see example below), or on the **Connectionrequest** event.



## 2 INSTALLATION AND CONFIGURATION

### 2.1 Installation

Download the `eltex-acs-nbi2_1.0.9-131_all.deb` package from the cloud storage to the root directory of the ACS server user here: <https://cloud.eltex-co.ru/index.php/s/wbqLvwPBj7WCL8y/download>

Execute the installation command:

```
# sudo dpkg -i eltex-acs-nbi2_1.0.9-131_all.deb
```

### 2.2 Connecting to NBI, getting a list of requests

You can get the available requests via the link: <http://acs-eltex.local:8080/AcsNbi2Service/api>

The **JSON** file should be downloaded (may be opened in browser) via the link. If the download has occurred, then the installation is completed successfully.

This **json** file is in **Swagger 2.0** format. This format can be opened in **SmartBearSoapUI** application where it will be shown as request list.

After opening the **SoapUI** application, you should create/add an empty project, call the context menu and select **Import Swagger** in it. In the opened dialog box define **url-api** in **Swagger Definition** field. After uploading and processing request list will be formed and shown in the tree form.

### 2.3 Request authentication/authorization

By default, requests are accepted using **Access Token**, in order to receive this **Token** you need to pass authentication, for this:

1. Find and open any request in tree, for example: **/AcsNbi2Service/AcsNbiService/GetAcsVersion**
2. Open **Auth** panel in the bottom of window
3. In the **Authorization** field choose **Add New Authorization...**
4. In the dialog box you should choose:

Type: **Oauth 2.0**

Profile name: <any appropriate name>

5. Open the **Get Token** parameters and fill the fields with following values:

- Oauth 2 Flow: **Authorization Code Grant**
- Client Identification: **acs**
- Client Secret: **password**
- Authorisation URI: **http://acs-eltex.local:8080/AcsNbi2Service/oauth/authorize**
- Access Token URI: **http://acs-eltex.local:8080/AcsNbi2Service/oauth/token**
- Redirect URI: **http://acs-eltex.local:8080/AcsNbi2Service/AcsNbi2Service/**
- Scope: **read write**

Click on the **Get Access Token** button. The browser window will be opened. There you should enter the login/password: **admin/password**. If authorization was successful, a unique authorization key will be present in the **Access Token** line.

Now you can execute the request and receive following **JSON**:

```
{
  "resultCode": "OK",
  "errorCode": "None",
  "message": "",
  "info": ""
```

```
"strings": ["Version: 1.11.225 13:52 28-03-2019"],  
"licenseError": false,  
"queryInProgress": false,  
"error": false  
}
```

All subsequent requests can now be performed after selecting the already received **Access Token**.

### 3 NBI REST API Guide

\* - The parameter should be defined

#### 3.1 /AcsNbiService/AddCpeParam

Description: Add additional device polling parameters

Request method: GET

| Parameter     | Value                       | Description |
|---------------|-----------------------------|-------------|
| calcType      | <i>string</i> *<br>Default: |             |
| hardwareClass | <i>string</i> *<br>Default: |             |
| listIndex     | <i>string</i> *<br>Default: |             |
| optionName    | <i>string</i> *<br>Default: |             |
| optionTitle   | <i>string</i> *<br>Default: |             |
| optionType    | <i>string</i> *<br>Default: |             |
| paramName     | <i>string</i> *<br>Default: |             |
| productClass  | <i>string</i> *<br>Default: |             |

Reply: ``ResponseObj``

#### 3.2 /AcsNbiService/DeleteCpeParam

Description: Delete additional device polling parameters

Request method: GET

| Parameter     | Value                       | Description |
|---------------|-----------------------------|-------------|
| hardwareClass | <i>string</i> *<br>Default: |             |
| optionName    | <i>string</i> *<br>Default: |             |

Reply: ``ResponseObj``

#### 3.3 /AcsNbiService/DeviceAdd

Description: Add new device

Request method: POST

| Parameter       | Value                       | Description |
|-----------------|-----------------------------|-------------|
| manufacturerOUI | <i>string</i> *<br>Default: |             |
| productClass    | <i>string</i> *<br>Default: |             |
| serialNumber    | <i>string</i> *<br>Default: |             |

Request body: ``ParamPairArrayWrapper``

Reply: ``ResponseObj``

#### 3.4 /AcsNbiService/DeviceAddNew

Description: Edit device parameters

Request method: POST

| Parameter       | Value                       | Description |
|-----------------|-----------------------------|-------------|
| manufacturerOUI | <i>string</i> *<br>Default: |             |
| productClass    | <i>string</i> *<br>Default: |             |
| serialNumber    | <i>string</i> *<br>Default: |             |

Request body: ``ParamPairArrayWrapper``

Reply: ``ResponseObj``

### 3.5 /AcsNbiService/DeviceAddService

Description: Add new service

Request method: GET

| Parameter       | Value                       | Description |
|-----------------|-----------------------------|-------------|
| instance        | <i>string</i> *<br>Default: |             |
| manufacturerOUI | <i>string</i> *<br>Default: |             |
| productClass    | <i>string</i> *<br>Default: |             |
| serialNumber    | <i>string</i> *<br>Default: |             |
| serviceName     | <i>string</i> *<br>Default: |             |

Reply: ``ResponseObj``

### 3.6 /AcsNbiService/DeviceDelete

Description: Delete service

Request method: GET

| Parameter       | Value                       | Description |
|-----------------|-----------------------------|-------------|
| manufacturerOUI | <i>string</i> *<br>Default: |             |
| productClass    | <i>string</i> *<br>Default: |             |
| serialNumber    | <i>string</i> *<br>Default: |             |

Reply: ``ResponseObj``

### 3.7 /AcsNbiService/DeviceDeleteAllCommands

Description: Delete all request from command queue, for the specified device

Request method: GET

| Parameter       | Value                       | Description |
|-----------------|-----------------------------|-------------|
| manufacturerOUI | <i>string</i> *<br>Default: |             |
| productClass    | <i>string</i> *<br>Default: |             |
| serialNumber    | <i>string</i> *<br>Default: |             |

Reply: ``ResponseObj``

### 3.8 /AcsNbiService/DeviceDeleteAllIpPingDiagnosticsCommands

Description: Delete all IpPingDiagnostics requests for the specified device

Request method: GET

| Parameter       | Value                       | Description |
|-----------------|-----------------------------|-------------|
| manufacturerOUI | <i>string</i> *<br>Default: |             |
| productClass    | <i>string</i> *<br>Default: |             |
| serialNumber    | <i>string</i> *<br>Default: |             |

Reply: ``ResponseObj``

### 3.9 /AcsNbiService/DeviceDeleteAllProperties

Description: Clear all data in the device parameters

Request method: GET

| Parameter       | Value                       | Description |
|-----------------|-----------------------------|-------------|
| manufacturerOUI | <i>string</i> *<br>Default: |             |
| productClass    | <i>string</i> *<br>Default: |             |
| serialNumber    | <i>string</i> *<br>Default: |             |

Reply: ``ResponseObj``

### 3.10 /AcsNbiService/DeviceDeleteAllServices

Description: Delete all services form the device

Request method: GET

| Parameter       | Value                       | Description |
|-----------------|-----------------------------|-------------|
| manufacturerOUI | <i>string</i> *<br>Default: |             |
| productClass    | <i>string</i> *<br>Default: |             |
| serialNumber    | <i>string</i> *<br>Default: |             |

Reply: `\ResponseObj``

### 3.11 /AcsNbiService/DeviceDeleteByFilter

Description: Delete devices by filter conditions, except defined serials

Request method: POST

| Parameter     | Value                       | Description |
|---------------|-----------------------------|-------------|
| hardwareClass | <i>string</i> *<br>Default: |             |

Request body: `CpePageSettingsAndStringArrayWrapper``

Reply: `\ResponseObj``

### 3.12 /AcsNbiService/DeviceDeleteCommand

Description: Delete device request command

Request method: GET

| Parameter | Value                       | Description |
|-----------|-----------------------------|-------------|
| requestId | <i>string</i> *<br>Default: |             |

Reply: `\ResponseObj``

### 3.13 /AcsNbiService/DeviceDeleteIpPingDiagnosticsCommand

Description: Delete IpPingDiagnostics command

Request method: GET

| Parameter | Value                       | Description |
|-----------|-----------------------------|-------------|
| requestId | <i>string</i> *<br>Default: |             |

Reply: `\ResponseObj``

### 3.14 /AcsNbiService/DeviceDeleteList

Description: Delete devices by serial number list

Request method: POST

| Parameter     | Value                       | Description |
|---------------|-----------------------------|-------------|
| hardwareClass | <i>string</i> *<br>Default: |             |

Request body: `\StringArrayWrapper``

Reply: `\ResponseObj``

### 3.15 /AcsNbiService/DeviceDeleteOptions

Description: Delete device options

Request method: POST

| Parameter       | Value                       | Description |
|-----------------|-----------------------------|-------------|
| manufacturerOUI | <i>string</i> *<br>Default: |             |
| productClass    | <i>string</i> *<br>Default: |             |
| serialNumber    | <i>string</i> *<br>Default: |             |

Request body: `\StringArrayWrapper``

Reply: `\ResponseObj``

### 3.16 /AcsNbiService/DeviceDeletePersonalFirmware

Description: Delete personal update rule

Request method: GET

| Parameter       | Value                       | Description |
|-----------------|-----------------------------|-------------|
| manufacturerOUI | <i>string</i> *<br>Default: |             |
| productClass    | <i>string</i> *<br>Default: |             |
| serialNumber    | <i>string</i> *<br>Default: |             |

Reply: `\ResponseObj``

### 3.17 /AcsNbiService/DeviceDeleteProperty

Description: Delete personal parameters for device

Request method: GET

| Parameter       | Value                       | Description |
|-----------------|-----------------------------|-------------|
| manufacturerOUI | <i>string</i> *<br>Default: |             |
| productClass    | <i>string</i> *<br>Default: |             |
| propertyName    | <i>string</i> *<br>Default: |             |
| serialNumber    | <i>string</i> *<br>Default: |             |
| shortMode       | <i>string</i> *<br>Default: |             |

Reply: `\ResponseObj``

### 3.18 /AcsNbiService/DeviceDeleteService

Description: Delete device service

Request method: GET

| Parameter       | Value                       | Description |
|-----------------|-----------------------------|-------------|
| instance        | <i>string</i> *<br>Default: |             |
| manufacturerOUI | <i>string</i> *<br>Default: |             |
| productClass    | <i>string</i> *<br>Default: |             |
| serialNumber    | <i>string</i> *<br>Default: |             |
| serviceName     | <i>string</i> *<br>Default: |             |

Reply: `\ResponseObj``

### 3.19 /AcsNbiService/DeviceGetAvailableProfiles

Description: List of available profiles for device

Request method: GET

| Parameter       | Value                       | Description |
|-----------------|-----------------------------|-------------|
| manufacturerOUI | <i>string</i> *<br>Default: |             |
| productClass    | <i>string</i> *<br>Default: |             |
| serialNumber    | <i>string</i> *<br>Default: |             |

Reply: `\ProfileItemsResponse``

### 3.20 /AcsNbiService/DeviceGetAvailableServices

Description: List of available services for device

Request method: GET

| Parameter       | Value                       | Description |
|-----------------|-----------------------------|-------------|
| manufacturerOUI | <i>string</i> *<br>Default: |             |
| productClass    | <i>string</i> *<br>Default: |             |
| serialNumber    | <i>string</i> *<br>Default: |             |

Reply: `\ServiceItemsResponse``



### 3.21 /AcsNbiService/DeviceGetAvailableShortPropertyNames

Description: List of available 'short' parameters for the specified device or class of devices

Request method: GET

| Parameter       | Value                       | Description |
|-----------------|-----------------------------|-------------|
| manufacturerOUI | <i>string</i> *<br>Default: |             |
| productClass    | <i>string</i> *<br>Default: |             |
| serialNumber    | <i>string</i> *<br>Default: |             |

Reply: `\StringsResponse\`

### 3.22 /AcsNbiService/DeviceGetBySerial

Description: Get device information

Request method: GET

| Parameter     | Value                       | Description |
|---------------|-----------------------------|-------------|
| hardwareClass | <i>string</i> *<br>Default: |             |
| serialNumber  | <i>string</i> *<br>Default: |             |

Reply: `\SimpleCpeResponse\`

### 3.23 /AcsNbiService/DeviceGetCommandRequestAnswer

Description: Returns the task status (and its data in the list form) by its identifier in the DB. The status is returned as a ParamPair with REQUEST\_STATUS name and a list of values: NEW, IN\_PROGRESS, DONE, ERROR, NOT\_FOUND

Request method: GET

| Parameter | Value                       | Description |
|-----------|-----------------------------|-------------|
| requestId | <i>string</i> *<br>Default: |             |

Reply: `\ParamPairResponse\`

### 3.24 /AcsNbiService/DeviceGetCommandState

Description: Command execution status

Request method: GET

| Parameter | Value                       | Description |
|-----------|-----------------------------|-------------|
| requestId | <i>string</i> *<br>Default: |             |

Reply: `\RequestStateResponse\`

### 3.25 /AcsNbiService/DeviceGetCount

Description: Number of devices

Request method: POST

Request body: `\CpePageSettings\`

Reply: `\IntResponse\`

### 3.26 /AcsNbiService/DeviceGetCountByHardwareClass

Description: Number of devices in class

Request method: GET

| Parameter     | Value                       | Description |
|---------------|-----------------------------|-------------|
| hardwareClass | <i>string</i> *<br>Default: |             |

Reply: `\IntResponse\`

### 3.27 /AcsNbiService/DeviceGetFilteredCountByHardwareClass

Description: Number of devices based on the filter

Request method: GET

| Parameter     | Value                       | Description |
|---------------|-----------------------------|-------------|
| hardwareClass | <i>string</i> *<br>Default: |             |
| searchClause  | <i>string</i> *<br>Default: |             |

Reply: `\IntResponse\`

### 3.28 /AcsNbiService/DeviceGetGroupsList

Description: Get group list

Request method: GET

| Parameter       | Value                       | Description |
|-----------------|-----------------------------|-------------|
| manufacturerOUI | <i>string</i> *<br>Default: |             |
| productClass    | <i>string</i> *<br>Default: |             |
| serialNumber    | <i>string</i> *<br>Default: |             |

Reply: `\GroupItemsResponse\`

### 3.29 /AcsNbiService/DeviceGetIpPingDiagnosticsCommandList

Description: Get list of previously issued IpPingDiagnostics commands

Request method: GET

| Parameter       | Value                       | Description |
|-----------------|-----------------------------|-------------|
| manufacturerOUI | <i>string</i> *<br>Default: |             |
| productClass    | <i>string</i> *<br>Default: |             |
| serialNumber    | <i>string</i> *<br>Default: |             |

Reply: `\IpPingItemsResponse\`

### 3.30 /AcsNbiService/DeviceGetIpPingDiagnosticsInfo

Description: Request for information about IpPingDiagnostics command status and result

Request method: GET

| Parameter | Value                       | Description |
|-----------|-----------------------------|-------------|
| requestId | <i>string</i> *<br>Default: |             |

Reply: `\IpPingItemsResponse\`

### 3.31 /AcsNbiService/DeviceGetItem

Description: Request for detailed device information

Request method: GET

| Parameter       | Value                       | Description |
|-----------------|-----------------------------|-------------|
| manufacturerOUI | <i>string</i> *<br>Default: |             |
| productClass    | <i>string</i> *<br>Default: |             |
| serialNumber    | <i>string</i> *<br>Default: |             |

Reply: `\CpeItemResponse\`

### 3.32 /AcsNbiService/DeviceGetListByClause

Description: Expanded device search

Request method: GET

| Parameter     | Value                       | Description |
|---------------|-----------------------------|-------------|
| hardwareClass | <i>string</i> *<br>Default: |             |
| searchClause  | <i>string</i> *<br>Default: |             |

Reply: `\SimpleCpeResponse\`

### 3.33 /AcsNbiService/DeviceGetListByHardware

Description: Get list of devices by manufacturer and class

Request method: GET

| Parameter       | Value                       | Description |
|-----------------|-----------------------------|-------------|
| manufacturerOUI | <i>string</i> *<br>Default: |             |
| productClass    | <i>string</i> *<br>Default: |             |

Reply: `\SimpleCpeResponse\`

### 3.34 /AcsNbiService/DeviceGetListByHardwareClass

Description: Get list of devices of class

Request method: GET

| Parameter     | Value                       | Description |
|---------------|-----------------------------|-------------|
| hardwareClass | <i>string</i> *<br>Default: |             |

Reply: `\SimpleCpeResponse\``

### 3.35 /AcsNbiService/DeviceGetListByIP

Description: Search of devices by partial or full match with IP address

Request method: GET

| Parameter | Value                     | Description |
|-----------|---------------------------|-------------|
| ip        | <i>string</i><br>Default: |             |

Reply: `\SimpleCpeResponse\``

### 3.36 /AcsNbiService/DeviceGetListByParamsWithAND

Description: Get list of devices with several 'AND' conditions

Request method: POST

| Parameter     | Value                       | Description |
|---------------|-----------------------------|-------------|
| hardwareClass | <i>string</i> *<br>Default: |             |

Request body: `\SearchParamArrayWrapper\``

Reply: `\SimpleCpeResponse\``

### 3.37 /AcsNbiService/DeviceGetListByParamsWithOR

Description: Get list of devices with several 'OR' conditions

Request method: POST

| Parameter     | Value                       | Description |
|---------------|-----------------------------|-------------|
| hardwareClass | <i>string</i> *<br>Default: |             |

Request body: `\SearchParamArrayWrapper\``

Reply: `\SimpleCpeResponse\``

### 3.38 /AcsNbiService/DeviceGetManagementParams

Description: Get login/password for connection to server or to device from device

Request method: GET

| Parameter       | Value                       | Description |
|-----------------|-----------------------------|-------------|
| manufacturerOUI | <i>string</i> *<br>Default: |             |
| productClass    | <i>string</i> *<br>Default: |             |
| serialNumber    | <i>string</i> *<br>Default: |             |

Reply: `\ParamPairResponse\``

### 3.39 /AcsNbiService/DeviceGetOptionList

Description: Get list of device options

Request method: GET

| Parameter       | Value                       | Description |
|-----------------|-----------------------------|-------------|
| manufacturerOUI | <i>string</i> *<br>Default: |             |
| productClass    | <i>string</i> *<br>Default: |             |
| serialNumber    | <i>string</i> *<br>Default: |             |

Reply: `\CpeOptionsResponse\``

### 3.40 /AcsNbiService/DeviceGetPageList

Description: Get list of devices starting from specified page

Request method: POST

Request body: `\CpePageSettings\``

Reply: `\SimpleCpeResponse\``

### 3.41 /AcsNbiService/DeviceGetProperty

Description: List of private device properties

Request method: GET

| Parameter       | Value                       | Description |
|-----------------|-----------------------------|-------------|
| manufacturerOUI | <i>string *</i><br>Default: |             |
| productClass    | <i>string *</i><br>Default: |             |
| serialNumber    | <i>string *</i><br>Default: |             |
| shortMode       | <i>string *</i><br>Default: |             |

Reply: `\ParamPairResponse\``

### 3.42 /AcsNbiService/DeviceGetPropertyList

Description: List of private device properties by list of required properties

Request method: POST

| Parameter       | Value                       | Description |
|-----------------|-----------------------------|-------------|
| manufacturerOUI | <i>string *</i><br>Default: |             |
| productClass    | <i>string *</i><br>Default: |             |
| serialNumber    | <i>string *</i><br>Default: |             |
| shortMode       | <i>string *</i><br>Default: |             |

Request body: `\StringArrayWrapper\``

Reply: `\ParamPairResponse\``

### 3.43 /AcsNbiService/DeviceGetSerialsByPersonalFirmware

Description: Get list of devices related with update rule

Request method: GET

| Parameter        | Value                       | Description |
|------------------|-----------------------------|-------------|
| firmwareRuleName | <i>string *</i><br>Default: |             |
| hardwareClass    | <i>string *</i><br>Default: |             |

Reply: `\StringsResponse\``

### 3.44 /AcsNbiService/DeviceGetSerialsByPersonalFirmwareAddQuery

Description: Pending request for getting list of devices related with update rule

Request method: GET

| Parameter        | Value                       | Description |
|------------------|-----------------------------|-------------|
| firmwareRuleName | <i>string *</i><br>Default: |             |
| hardwareClass    | <i>string *</i><br>Default: |             |

Reply: `\LongQueryResponse\``

### 3.45 /AcsNbiService/DeviceGetServicesList

Description: Get list of services related with device

Request method: GET

| Parameter       | Value                       | Description |
|-----------------|-----------------------------|-------------|
| manufacturerOUI | <i>string *</i><br>Default: |             |
| productClass    | <i>string *</i><br>Default: |             |
| serialNumber    | <i>string *</i><br>Default: |             |

Reply: `\ServiceItemsResponse\``

### 3.46 /AcsNbiService/DeviceReplaceToGroup

Description: Edit group with which the device is related

Request method: GET

| Parameter       | Value                       | Description |
|-----------------|-----------------------------|-------------|
| dstGroupName    | <i>string</i> *<br>Default: |             |
| manufacturerOUI | <i>string</i> *<br>Default: |             |
| productClass    | <i>string</i> *<br>Default: |             |
| serialNumber    | <i>string</i> *<br>Default: |             |
| srcGroupName    | <i>string</i> *<br>Default: |             |

Reply: `\ResponseObj``

### 3.47 /AcsNbiService/DeviceReplaceToGroupByCriteria

Description: Edit group with which devices that found by criteria are related

Request method: GET

| Parameter     | Value                       | Description |
|---------------|-----------------------------|-------------|
| additionValue | <i>string</i> *<br>Default: |             |
| criteria      | <i>string</i> *<br>Default: |             |
| dstGroupName  | <i>string</i> *<br>Default: |             |
| hardwareClass | <i>string</i> *<br>Default: |             |
| srcGroupName  | <i>string</i> *<br>Default: |             |
| Value         | <i>string</i> *<br>Default: |             |

Reply: `\ResponseObj``

### 3.48 /AcsNbiService/DeviceSendCommandAddObject

Description: Immediate request for adding new parameter object; in case of success puts saved task in

`ResponseObj.RequestId`

Request method: GET

| Parameter       | Value                       | Description |
|-----------------|-----------------------------|-------------|
| manufacturerOUI | <i>string</i> *<br>Default: |             |
| objectName      | <i>string</i> *<br>Default: |             |
| productClass    | <i>string</i> *<br>Default: |             |
| serialNumber    | <i>string</i> *<br>Default: |             |

Reply: `\RequestStateResponse``

### 3.49 /AcsNbiService/DeviceSendCommandDeleteObject

Description: Immediate request for parameter object deletion

Request method: GET

| Parameter       | Value                       | Description |
|-----------------|-----------------------------|-------------|
| manufacturerOUI | <i>string</i> *<br>Default: |             |
| objectName      | <i>string</i> *<br>Default: |             |
| productClass    | <i>string</i> *<br>Default: |             |
| serialNumber    | <i>string</i> *<br>Default: |             |

Reply: `\RequestStateResponse``

### 3.50 /AcsNbiService/DeviceSendCommandDownloadFirmware

Description: Immediate request for device updating with specified file

Request method: GET

| Parameter       | Value                       | Description |
|-----------------|-----------------------------|-------------|
| fileName        | <i>string</i> *<br>Default: |             |
| manufacturerOUI | <i>string</i> *<br>Default: |             |
| productClass    | <i>string</i> *<br>Default: |             |
| serialNumber    | <i>string</i> *<br>Default: |             |

Reply: `\RequestStateResponse\`

### 3.51 /AcsNbiService/DeviceSendCommandDownloadFirmwareRemote

Description: Immediate request for firmware update from specified URL address

Request method: GET

| Parameter       | Value                       | Description |
|-----------------|-----------------------------|-------------|
| manufacturerOUI | <i>string</i> *<br>Default: |             |
| productClass    | <i>string</i> *<br>Default: |             |
| serialNumber    | <i>string</i> *<br>Default: |             |
| url             | <i>string</i> *<br>Default: |             |

Reply: `\RequestStateResponse\`

### 3.52 /AcsNbiService/DeviceSendCommandGetParamNames

Description: Immediate request for parameter names getting

Request method: GET

| Parameter       | Value                       | Description |
|-----------------|-----------------------------|-------------|
| manufacturerOUI | <i>string</i> *<br>Default: |             |
| nextLevel       | <i>string</i> *<br>Default: |             |
| paramPath       | <i>string</i> *<br>Default: |             |
| productClass    | <i>string</i> *<br>Default: |             |
| serialNumber    | <i>string</i> *<br>Default: |             |

Reply: `\RequestStateResponse\`

### 3.53 /AcsNbiService/DeviceSendCommandGetParamValueList

Description: Immediate request for getting list of parameters and its values

Request method: POST

| Parameter       | Value                       | Description |
|-----------------|-----------------------------|-------------|
| manufacturerOUI | <i>string</i> *<br>Default: |             |
| productClass    | <i>string</i> *<br>Default: |             |
| serialNumber    | <i>string</i> *<br>Default: |             |

Request body: `\StringArrayWrapper\`

Reply: `\RequestStateResponse\`

### 3.54 /AcsNbiService/DeviceSendCommandSetParamValueList

Description: Immediate request for setting list of parameters

Request method: POST

| Parameter       | Value                       | Description |
|-----------------|-----------------------------|-------------|
| manufacturerOUI | <i>string</i> *<br>Default: |             |
| ParameterKey    | <i>string</i> *<br>Default: |             |
| productClass    | <i>string</i> *<br>Default: |             |
| serialNumber    | <i>string</i> *<br>Default: |             |

Request body: ``ParamPairArrayWrapper``

Reply: ``RequestStateResponse``

### 3.55 /AcsNbiService/DeviceSendCommandUpgrade

Description: Immediate request for firmware update according to set rule

Request method: GET

| Parameter       | Value                       | Description |
|-----------------|-----------------------------|-------------|
| manufacturerOUI | <i>string</i> *<br>Default: |             |
| productClass    | <i>string</i> *<br>Default: |             |
| serialNumber    | <i>string</i> *<br>Default: |             |

Reply: ``RequestStateResponse``

### 3.56 /AcsNbiService/DeviceSendCommandUploadDeviceLogs

Description: Immediate request for log uploading from device

Request method: GET

| Parameter       | Value                       | Description |
|-----------------|-----------------------------|-------------|
| manufacturerOUI | <i>string</i> *<br>Default: |             |
| productClass    | <i>string</i> *<br>Default: |             |
| serialNumber    | <i>string</i> *<br>Default: |             |

Reply: ``RequestStateResponse``

### 3.57 /AcsNbiService/DeviceSendCommandUploadScreenshot

Description: Immediate request for creation and uploading current screen image on server

Request method: GET

| Parameter       | Value                       | Description |
|-----------------|-----------------------------|-------------|
| manufacturerOUI | <i>string</i> *<br>Default: |             |
| productClass    | <i>string</i> *<br>Default: |             |
| serialNumber    | <i>string</i> *<br>Default: |             |

Reply: ``RequestStateResponse``

### 3.58 /AcsNbiService/DeviceSendIpPingDiagnostics

Description: Immediate request for diagnostics start

Request method: GET

| Parameter       | Value           | Description |
|-----------------|-----------------|-------------|
| blockSize       | <i>string</i> * |             |
|                 | Default:        |             |
| dscp            | <i>string</i> * |             |
|                 | Default:        |             |
| interfaceName   | <i>string</i> * |             |
|                 | Default:        |             |
| ipAddress       | <i>string</i> * |             |
|                 | Default:        |             |
| manufacturerOUI | <i>string</i> * |             |
|                 | Default:        |             |
| numOfReps       | <i>string</i> * |             |
|                 | Default:        |             |
| productClass    | <i>string</i> * |             |
|                 | Default:        |             |
| serialNumber    | <i>string</i> * |             |
|                 | Default:        |             |
| timeout         | <i>string</i> * |             |
|                 | Default:        |             |

Reply: `RequestStateResponse`

### 3.59 /AcsNbiService/DeviceSendReboot

Description: Immediate request for device reboot

Request method: GET

| Parameter       | Value           | Description |
|-----------------|-----------------|-------------|
| manufacturerOUI | <i>string</i> * |             |
|                 | Default:        |             |
| productClass    | <i>string</i> * |             |
|                 | Default:        |             |
| serialNumber    | <i>string</i> * |             |
|                 | Default:        |             |

Reply: `ResponseObj`

### 3.60 /AcsNbiService/DeviceSendReconfigure

Description: Immediate request for synchronization and parameter application

Request method: GET

| Parameter       | Value           | Description |
|-----------------|-----------------|-------------|
| manufacturerOUI | <i>string</i> * |             |
|                 | Default:        |             |
| productClass    | <i>string</i> * |             |
|                 | Default:        |             |
| serialNumber    | <i>string</i> * |             |
|                 | Default:        |             |

Reply: `ResponseObj`

### 3.61 /AcsNbiService/DeviceSendResetToDefault

Description: Immediate request for device reset to the factory default settings

Request method: GET

| Parameter       | Value           | Description |
|-----------------|-----------------|-------------|
| manufacturerOUI | <i>string</i> * |             |
|                 | Default:        |             |
| productClass    | <i>string</i> * |             |
|                 | Default:        |             |
| serialNumber    | <i>string</i> * |             |
|                 | Default:        |             |

Reply: `ResponseObj`



### 3.62 /AcsNbiService/DeviceSendSetPassword

Description: Immediate request for set passwords application

Request method: GET

| Parameter       | Value                       | Description |
|-----------------|-----------------------------|-------------|
| manufacturerOUI | <i>string</i> *<br>Default: |             |
| productClass    | <i>string</i> *<br>Default: |             |
| serialNumber    | <i>string</i> *<br>Default: |             |

Reply: `\ResponseObj\``

### 3.63 /AcsNbiService/DeviceSendWakeOnLan

Description: Immediate request for device wake up

Request method: GET

| Parameter       | Value                       | Description |
|-----------------|-----------------------------|-------------|
| manufacturerOUI | <i>string</i> *<br>Default: |             |
| productClass    | <i>string</i> *<br>Default: |             |
| serialNumber    | <i>string</i> *<br>Default: |             |

Reply: `\ResponseObj\``

### 3.64 /AcsNbiService/DeviceSetDtOptionList

Description: Request for DateTime parameters change

Request method: POST

| Parameter       | Value                       | Description |
|-----------------|-----------------------------|-------------|
| manufacturerOUI | <i>string</i> *<br>Default: |             |
| productClass    | <i>string</i> *<br>Default: |             |
| serialNumber    | <i>string</i> *<br>Default: |             |

Request body: `\OptionStrParamArrayWrapper\``

Reply: `\ResponseObj\``

### 3.65 /AcsNbiService/DeviceSetIntOptionList

Description: Request for Int parameters change

Request method: POST

| Parameter       | Value                       | Description |
|-----------------|-----------------------------|-------------|
| manufacturerOUI | <i>string</i> *<br>Default: |             |
| productClass    | <i>string</i> *<br>Default: |             |
| serialNumber    | <i>string</i> *<br>Default: |             |

Request body: `\OptionNumParamArrayWrapper\``

Reply: `\ResponseObj\``

### 3.66 /AcsNbiService/DeviceSetLongOptionList

Description: Request for Long parameters change

Request method: POST

| Parameter       | Value                       | Description |
|-----------------|-----------------------------|-------------|
| manufacturerOUI | <i>string</i> *<br>Default: |             |
| productClass    | <i>string</i> *<br>Default: |             |
| serialNumber    | <i>string</i> *<br>Default: |             |

Request body: `\OptionNumParamArrayWrapper\``

Reply: `\ResponseObj\``

### 3.67 /AcsNbiService/DeviceSetManagementParams

Description: Request for management parameters setting

Request method: POST

| Parameter       | Value                       | Description |
|-----------------|-----------------------------|-------------|
| manufacturerOUI | <i>string</i> *<br>Default: |             |
| productClass    | <i>string</i> *<br>Default: |             |
| serialNumber    | <i>string</i> *<br>Default: |             |

Request body: `\ParamPairArrayWrapper\``

Reply: `\ResponseObj\``

### 3.68 /AcsNbiService/DeviceSetPersonalFirmware

Description: Request for device relation to update rule

Request method: GET

| Parameter       | Value                       | Description |
|-----------------|-----------------------------|-------------|
| firmwareRule    | <i>string</i> *<br>Default: |             |
| manufacturerOUI | <i>string</i> *<br>Default: |             |
| productClass    | <i>string</i> *<br>Default: |             |
| serialNumber    | <i>string</i> *<br>Default: |             |

Reply: `\ResponseObj\``

### 3.69 /AcsNbiService/DeviceSetProfile

Description: Request for device relation to profile

Request method: GET

| Parameter       | Value                       | Description |
|-----------------|-----------------------------|-------------|
| manufacturerOUI | <i>string</i> *<br>Default: |             |
| productClass    | <i>string</i> *<br>Default: |             |
| profileName     | <i>string</i> *<br>Default: |             |
| serialNumber    | <i>string</i> *<br>Default: |             |

Reply: `\ResponseObj\``

### 3.70 /AcsNbiService/DeviceSetProperty

Description: Request for parameter setting

Request method: GET

| Parameter       | Value                       | Description |
|-----------------|-----------------------------|-------------|
| manufacturerOUI | <i>string</i> *<br>Default: |             |
| productClass    | <i>string</i> *<br>Default: |             |
| propertyName    | <i>string</i> *<br>Default: |             |
| propertyValue   | <i>string</i> *<br>Default: |             |
| serialNumber    | <i>string</i> *<br>Default: |             |
| shortMode       | <i>string</i> *<br>Default: |             |

Reply: `\ResponseObj\``

### 3.71 /AcsNbiService/DeviceSetPropertyList

Description: Request for parameter list setting

Request method: POST

| Parameter       | Value                       | Description |
|-----------------|-----------------------------|-------------|
| manufacturerOUI | <i>string</i> *<br>Default: |             |
| productClass    | <i>string</i> *<br>Default: |             |
| serialNumber    | <i>string</i> *<br>Default: |             |
| shortMode       | <i>string</i> *<br>Default: |             |

Request body: `\ParamPairArrayWrapper\``

Reply: `\ResponceObj\``

### 3.72 /AcsNbiService/DeviceSetStrOptionList

Description: Request for Str parameters list setting

Request method: POST

| Parameter       | Value                       | Description |
|-----------------|-----------------------------|-------------|
| manufacturerOUI | <i>string</i> *<br>Default: |             |
| productClass    | <i>string</i> *<br>Default: |             |
| serialNumber    | <i>string</i> *<br>Default: |             |

Request body: `\OptionStrParamArrayWrapper\``

Reply: `\ResponceObj\``

### 3.73 /AcsNbiService/DeviceSetTxtOptionList

Description: Request for txt parameters list setting

Request method: POST

| Parameter       | Value                       | Description |
|-----------------|-----------------------------|-------------|
| manufacturerOUI | <i>string</i> *<br>Default: |             |
| productClass    | <i>string</i> *<br>Default: |             |
| serialNumber    | <i>string</i> *<br>Default: |             |

Request body: `\OptionStrParamArrayWrapper\``

Reply: `\ResponceObj\``

### 3.74 /AcsNbiService/DeviceUpdate

Description: Request for parameters update

Request method: POST

| Parameter       | Value                       | Description |
|-----------------|-----------------------------|-------------|
| manufacturerOUI | <i>string</i> *<br>Default: |             |
| productClass    | <i>string</i> *<br>Default: |             |
| serialNumber    | <i>string</i> *<br>Default: |             |

Request body: `\ParamPairArrayWrapper\``

Reply: `\ResponceObj\``

### 3.75 /AcsNbiService/DevicesGetOptionList

Description: Request for options list getting

Request method: POST

Request body: `\LongArrayWrapper\``

Reply: `\CpeOptionsResponce\``

### 3.76 /AcsNbiService/DevicesGetOptionListByNames

Description: Request for option list getting by names

Request method: POST

Request body: `\LongArrayAndStringArrayWrapper\``

Reply: `\CpeOptionsResponse\``

### 3.77 /AcsNbiService/EventsAddSubscribe

Description: Request for user subscription to the event

Request method: POST

| Parameter | Value                       | Description |
|-----------|-----------------------------|-------------|
| event     | <i>string</i> *<br>Default: |             |
| url       | <i>string</i> *<br>Default: |             |

Request body: `\ParamPairArrayWrapper\``

Reply: `\ResponseObj\``

### 3.78 /AcsNbiService/EventsDeleteSubscribe

Description: Request for cancellation user subscription on the event

Request method: GET

| Parameter | Value                       | Description |
|-----------|-----------------------------|-------------|
| event     | <i>string</i> *<br>Default: |             |
| subscrId  | <i>string</i> *<br>Default: |             |
| url       | <i>string</i> *<br>Default: |             |

Reply: `\ResponseObj\``

### 3.79 /AcsNbiService/EventsGetFilterList

Description: Request for list of filters for event

Request method: GET

| Parameter | Value                       | Description |
|-----------|-----------------------------|-------------|
| event     | <i>string</i> *<br>Default: |             |

Reply: `\StringsResponse\``

### 3.80 /AcsNbiService/EventsGetList

Description: Request for getting list of events

Request method: GET

Reply: `\StringsResponse\``

### 3.81 /AcsNbiService/EventsGetSubscriptionListByURL

Description: Request for getting list of subscriptions on specified URL

Request method: GET

| Parameter | Value                       | Description |
|-----------|-----------------------------|-------------|
| url       | <i>string</i> *<br>Default: |             |

Reply: `\SubscriptionItemsResponse\``

### 3.82 /AcsNbiService/FileDelete

Description: Request for file deletion

Request method: GET

| Parameter | Value                       | Description |
|-----------|-----------------------------|-------------|
| dstPath   | <i>string</i> *<br>Default: |             |

Reply: `\ResponseObj\``

### 3.83 /AcsNbiService/FileGetContent

Description: Request for file getting

Request method: GET

| Parameter | Value                       | Description |
|-----------|-----------------------------|-------------|
| dstPath   | <i>string</i> *<br>Default: |             |

Reply: `StringsResponse``

### 3.84 /AcsNbiService/FileGetList

Description: Request for getting list of files

Request method: GET

| Parameter | Value                       | Description |
|-----------|-----------------------------|-------------|
| dstPath   | <i>string</i> *<br>Default: |             |
| readLinks | <i>string</i> *<br>Default: |             |

Reply: `FileInfoResponse``

### 3.85 /AcsNbiService/FileGetListAddQuery

Description: Background request for getting list of files

Request method: GET

| Parameter | Value                       | Description |
|-----------|-----------------------------|-------------|
| dstPath   | <i>string</i> *<br>Default: |             |

Reply: `LongQueryResponse``

### 3.86 /AcsNbiService/FilePathGetLink

Description: Request for getting link on the way

Request method: GET

| Parameter | Value                       | Description |
|-----------|-----------------------------|-------------|
| dstPath   | <i>string</i> *<br>Default: |             |

Reply: `StringsResponse``

### 3.87 /AcsNbiService/FileUpload

Description: Request for sending file on server

Request method: GET

| Parameter   | Value                       | Description |
|-------------|-----------------------------|-------------|
| dstPath     | <i>string</i> *<br>Default: |             |
| ignoreCheck | <i>string</i> *<br>Default: |             |
| rewriteMode | <i>string</i> *<br>Default: |             |
| srcUrl      | <i>string</i> *<br>Default: |             |

Reply: `ResponseObj``

### 3.88 /AcsNbiService/FileUploadByClientIP

Description: Request for uploading file on server by clients IP

Request method: GET

| Parameter   | Value                       | Description |
|-------------|-----------------------------|-------------|
| dstPath     | <i>string</i> *<br>Default: |             |
| ignoreCheck | <i>string</i> *<br>Default: |             |
| rewriteMode | <i>string</i> *<br>Default: |             |
| srcUrlFmt   | <i>string</i> *<br>Default: |             |

Reply: `ResponseObj``

### 3.89 /AcsNbiService/FirmwareAddRule

Description: Request for update rule addition

Request method: GET

| Parameter         | Value                       | Description |
|-------------------|-----------------------------|-------------|
| downgradeVersions | <i>string</i> *<br>Default: |             |
| fileName          | <i>string</i> *<br>Default: |             |
| firmwareRule      | <i>string</i> *<br>Default: |             |
| hardwareClass     | <i>string</i> *<br>Default: |             |
| parseFileHeader   | <i>string</i> *<br>Default: |             |
| safeMode          | <i>string</i> *<br>Default: |             |
| scheduleEnable    | <i>string</i> *<br>Default: |             |
| url               | <i>string</i> *<br>Default: |             |
| version           | <i>string</i> *<br>Default: |             |

Reply: ``ResponseObj``

### 3.90 /AcsNbiService/FirmwareAssociateWithHardware

Description: Request for update rule relation to hardware

Request method: GET

| Parameter       | Value                       | Description |
|-----------------|-----------------------------|-------------|
| firmwareRule    | <i>string</i> *<br>Default: |             |
| manufacturerOUI | <i>string</i> *<br>Default: |             |
| productClass    | <i>string</i> *<br>Default: |             |

Reply: ``ResponseObj``

### 3.91 /AcsNbiService/FirmwareAssociateWithProfile

Description: Request for update rule relation to profile

Request method: GET

| Parameter     | Value                       | Description |
|---------------|-----------------------------|-------------|
| firmwareRule  | <i>string</i> *<br>Default: |             |
| hardwareClass | <i>string</i> *<br>Default: |             |
| profileName   | <i>string</i> *<br>Default: |             |

Reply: ``ResponseObj``

### 3.92 /AcsNbiService/FirmwareDeleteRule

Description: Request for update rule deletion

Request method: GET

| Parameter     | Value                       | Description |
|---------------|-----------------------------|-------------|
| firmwareRule  | <i>string</i> *<br>Default: |             |
| forced        | <i>string</i> *<br>Default: |             |
| hardwareClass | <i>string</i> *<br>Default: |             |

Reply: ``ResponseObj``

### 3.93 /AcsNbiService/FirmwareDisassociateWithHardware

Description: Request for update rule relation to hardware deletion

Request method: GET

| Parameter       | Value                       | Description |
|-----------------|-----------------------------|-------------|
| firmwareRule    | <i>string</i> *<br>Default: |             |
| manufacturerOUI | <i>string</i> *<br>Default: |             |
| productClass    | <i>string</i> *<br>Default: |             |

Reply: `\ResponseObj\``

### 3.94 /AcsNbiService/FirmwareDisassociateWithProfile

Description: Request for update rule relation to profile deletion

Request method: GET

| Parameter     | Value                       | Description |
|---------------|-----------------------------|-------------|
| firmwareRule  | <i>string</i> *<br>Default: |             |
| hardwareClass | <i>string</i> *<br>Default: |             |
| profileName   | <i>string</i> *<br>Default: |             |

Reply: `\ResponseObj\``

### 3.95 /AcsNbiService/FirmwareGetAssociateList

Description: Request for getting related rules

Request method: GET

| Parameter     | Value                       | Description |
|---------------|-----------------------------|-------------|
| firmwareRule  | <i>string</i> *<br>Default: |             |
| hardwareClass | <i>string</i> *<br>Default: |             |

Reply: `\FirmwareRulesResponseFirmwareRulesResponse\``

### 3.96 /AcsNbiService/FirmwareGetChangeCounter

Description: Request for changes counter

Request method: GET

Reply: `\LongResponse\``

### 3.97 /AcsNbiService/FirmwareGetFileListByHardware

Description: Request for list of rules for hardware

Request method: GET

| Parameter       | Value                       | Description |
|-----------------|-----------------------------|-------------|
| manufacturerOUI | <i>string</i> *<br>Default: |             |
| productClass    | <i>string</i> *<br>Default: |             |
| readLinks       | <i>string</i> *<br>Default: |             |

Reply: `\FileInfoResponse\``

### 3.98 /AcsNbiService/FirmwareGetFileListByProfile

Description: Request for list of rules for profile

Request method: GET

| Parameter     | Value                       | Description |
|---------------|-----------------------------|-------------|
| hardwareClass | <i>string</i> *<br>Default: |             |
| profileName   | <i>string</i> *<br>Default: |             |
| readLinks     | <i>string</i> *<br>Default: |             |

Reply: `\FileInfoResponse\``

### 3.99 /AcsNbiService/FirmwareGetRuleList

Description: Request for list of update rules

Request method: GET

| Parameter     | Value                       | Description |
|---------------|-----------------------------|-------------|
| hardwareClass | <i>string</i> *<br>Default: |             |

Reply: `\FirmwareRulesResponse\``

### 3.100 /AcsNbiService/FirmwareGetScheduleList

Description: Request for list of planned updates

Request method: GET

| Parameter     | Value                       | Description |
|---------------|-----------------------------|-------------|
| hardwareClass | <i>string</i> *<br>Default: |             |

Reply: `\ScheduleResponse\``

### 3.101 /AcsNbiService/FirmwareLinksGetChangeCounter

Description: Request for getting rule counter

Request method: GET

Reply: `\LongResponse\``

### 3.102 /AcsNbiService/FirmwareSaveSchedule

Description: Request for task addition to the scheduler

Request method: GET

| Parameter     | Value                       | Description |
|---------------|-----------------------------|-------------|
| dateEnd       | <i>string</i> *<br>Default: |             |
| dateStart     | <i>string</i> *<br>Default: |             |
| hardwareClass | <i>string</i> *<br>Default: |             |
| timeEnd       | <i>string</i> *<br>Default: |             |
| timeStart     | <i>string</i> *<br>Default: |             |
| weekDayEnd    | <i>string</i> *<br>Default: |             |
| weekDayStart  | <i>string</i> *<br>Default: |             |

Reply: `\ResponseObj\``

### 3.103 /AcsNbiService/FirmwareSetHardwareAssociateList

Description: Request for setting device types to the corresponding rule

Request method: POST

| Parameter     | Value                       | Description |
|---------------|-----------------------------|-------------|
| firmwareRule  | <i>string</i> *<br>Default: |             |
| hardwareClass | <i>string</i> *<br>Default: |             |

Request body: `\HardwarePairArrayWrapper\``

Reply: `\ResponseObj\``

### 3.104 /AcsNbiService/FirmwareSetProfileAssociateList

Description: Request for setting the list of profiles for a rule

Request method: POST

| Parameter     | Value                       | Description |
|---------------|-----------------------------|-------------|
| firmwareRule  | <i>string</i> *<br>Default: |             |
| hardwareClass | <i>string</i> *<br>Default: |             |

Request body: `\StringArrayWrapper\``

Reply: `\ResponseObj\``



### 3.105 /AcsNbiService/FirmwareUpdateRule

Description: Request for changing of update rule

Request method: GET

| Parameter         | Value                       | Description |
|-------------------|-----------------------------|-------------|
| downgradeVersions | <i>string</i> *<br>Default: |             |
| fileName          | <i>string</i> *<br>Default: |             |
| firmwareRule      | <i>string</i> *<br>Default: |             |
| hardwareClass     | <i>string</i> *<br>Default: |             |
| parseFileHeader   | <i>string</i> *<br>Default: |             |
| safeMode          | <i>string</i> *<br>Default: |             |
| scheduleEnable    | <i>string</i> *<br>Default: |             |
| url               | <i>string</i> *<br>Default: |             |
| version           | <i>string</i> *<br>Default: |             |

Reply: `\ResponseObj\`

### 3.106 /AcsNbiService/GetAcsStatistics

Description: Request for getting statistics from the server

Request method: GET

Reply: `\StringsResponse\`

### 3.107 /AcsNbiService/GetAcsVersion

Description: Request for getting ACS version

Request method: GET

Reply: `\StringsResponse\`

### 3.108 /AcsNbiService/GetCpeParam

Description: Request for set parameter

Request method: GET

| Parameter     | Value                       | Description |
|---------------|-----------------------------|-------------|
| hardwareClass | <i>string</i> *<br>Default: |             |
| optionName    | <i>string</i> *<br>Default: |             |

Reply: `\StringsResponse\`

### 3.109 /AcsNbiService/GetCpeParamList

Description: Request for getting list of set parameters

Request method: GET

| Parameter     | Value                       | Description |
|---------------|-----------------------------|-------------|
| hardwareClass | <i>string</i> *<br>Default: |             |
| listIndex     | <i>string</i> *<br>Default: |             |

Reply: `\ResponseObj\`

### 3.110 /AcsNbiService/GetServerInfo

Description: Request for server status information

Request method: GET

Reply: `\StringsResponse\`

### 3.111 /AcsNbiService/GetVersion

Description: Request for NBI version

Request method: GET

### 3.112 /AcsNbiService/GroupAdd

Description: Request for group addition

Request method: GET

| Parameter     | Value                       | Description |
|---------------|-----------------------------|-------------|
| groupName     | <i>string</i> *<br>Default: |             |
| hardwareClass | <i>string</i> *<br>Default: |             |

Reply: ``ResponseObj``

### 3.113 /AcsNbiService/GroupAddDevice

Description: Request for device addition to the group

Request method: GET

| Parameter       | Value                       | Description |
|-----------------|-----------------------------|-------------|
| groupName       | <i>string</i> *<br>Default: |             |
| manufacturerOUI | <i>string</i> *<br>Default: |             |
| productClass    | <i>string</i> *<br>Default: |             |
| serialNumber    | <i>string</i> *<br>Default: |             |

Reply: ``ResponseObj``

### 3.114 /AcsNbiService/GroupAddDeviceByCriteria

Description: Request for device addition to the group by criteria

Request method: GET

| Parameter     | Value                       | Description |
|---------------|-----------------------------|-------------|
| additionValue | <i>string</i> *<br>Default: |             |
| criteria      | <i>string</i> *<br>Default: |             |
| groupName     | <i>string</i> *<br>Default: |             |
| hardwareClass | <i>string</i> *<br>Default: |             |
| Value         | <i>string</i> *<br>Default: |             |

Reply: ``ResponseObj``

### 3.115 /AcsNbiService/GroupConvertFromProfile

Description: Request for profile transformation to the group

Request method: GET

| Parameter     | Value                       | Description |
|---------------|-----------------------------|-------------|
| groupName     | <i>string</i> *<br>Default: |             |
| hardwareClass | <i>string</i> *<br>Default: |             |
| profileName   | <i>string</i> *<br>Default: |             |

Reply: ``GroupItemsResponse``

### 3.116 /AcsNbiService/GroupCriteriaGetList

Description: Request for getting list of groups by criteria

Request method: GET

Reply: ``StringsResponse``

### 3.117 /AcsNbiService/GroupDelete

Description: Request for group deletion

Request method: GET

| Parameter     | Value                       | Description |
|---------------|-----------------------------|-------------|
| groupName     | <i>string</i> *<br>Default: |             |
| hardwareClass | <i>string</i> *<br>Default: |             |

Reply: `\ResponseObj\``

### 3.118 /AcsNbiService/GroupDeleteAllDevices

Description: Request for all devices deletion from the group

Request method: GET

| Parameter     | Value                       | Description |
|---------------|-----------------------------|-------------|
| groupName     | <i>string</i> *<br>Default: |             |
| hardwareClass | <i>string</i> *<br>Default: |             |

Reply: `\ResponseObj\``

### 3.119 /AcsNbiService/GroupDeleteDevice

Description: Request for device deletion from the group

Request method: GET

| Parameter       | Value                       | Description |
|-----------------|-----------------------------|-------------|
| groupName       | <i>string</i> *<br>Default: |             |
| manufacturerOUI | <i>string</i> *<br>Default: |             |
| productClass    | <i>string</i> *<br>Default: |             |
| serialNumber    | <i>string</i> *<br>Default: |             |

Reply: `\ResponseObj\``

### 3.120 /AcsNbiService/GroupDeleteDeviceByCriteria

Description: Request for device deletion from the group by criteria

Request method: GET

| Parameter     | Value                       | Description |
|---------------|-----------------------------|-------------|
| additionValue | <i>string</i> *<br>Default: |             |
| criteria      | <i>string</i> *<br>Default: |             |
| groupName     | <i>string</i> *<br>Default: |             |
| hardwareClass | <i>string</i> *<br>Default: |             |
| Value         | <i>string</i> *<br>Default: |             |

Reply: `\ResponseObj\``

### 3.121 /AcsNbiService/GroupDeletePersonalFirmware

Description: Request for update rule deletion for all devices of the group

Request method: GET

| Parameter     | Value                       | Description |
|---------------|-----------------------------|-------------|
| groupName     | <i>string</i> *<br>Default: |             |
| hardwareClass | <i>string</i> *<br>Default: |             |

Reply: `\ResponseObj\``

### 3.122 /AcsNbiService/GroupGetCommandState

Description: Request for getting status of the command that executing on group of devices In the first place, incomplete commands are monitored, and in the second place, if all commands are completed, the presence of errors

Request method: GET

| Parameter      | Value                       | Description |
|----------------|-----------------------------|-------------|
| groupRequestId | <i>string</i> *<br>Default: |             |

Reply: `RequestStateResponse``

### 3.123 /AcsNbiService/GroupGetDevicesList

Description: Request for list of devices in the group

Request method: GET

| Parameter     | Value                       | Description |
|---------------|-----------------------------|-------------|
| groupName     | <i>string</i> *<br>Default: |             |
| hardwareClass | <i>string</i> *<br>Default: |             |

Reply: `SimpleCpeResponse``

### 3.124 /AcsNbiService/GroupGetList

Description: Request for list of groups

Request method: GET

| Parameter     | Value                       | Description |
|---------------|-----------------------------|-------------|
| hardwareClass | <i>string</i> *<br>Default: |             |

Reply: `GroupItemsResponse``

### 3.125 /AcsNbiService/GroupSendCommandDownloadFirmware

Description: Immediate request for update of group of devices by rule

Request method: GET

| Parameter     | Value                       | Description |
|---------------|-----------------------------|-------------|
| fileName      | <i>string</i> *<br>Default: |             |
| groupName     | <i>string</i> *<br>Default: |             |
| hardwareClass | <i>string</i> *<br>Default: |             |

Reply: `ResponseObj``

### 3.126 /AcsNbiService/GroupSendCommandDownloadFirmwareRemote

Description: Immediate request for update of group of devices by specified URL

Request method: GET

| Parameter     | Value                       | Description |
|---------------|-----------------------------|-------------|
| groupName     | <i>string</i> *<br>Default: |             |
| hardwareClass | <i>string</i> *<br>Default: |             |
| url           | <i>string</i> *<br>Default: |             |

Reply: `ResponseObj``

### 3.127 /AcsNbiService/GroupSendCommandSetParamЗначениеList

Description: Immediate request for setting group parameters

Request method: POST

| Parameter     | Value                       | Description |
|---------------|-----------------------------|-------------|
| groupName     | <i>string</i> *<br>Default: |             |
| hardwareClass | <i>string</i> *<br>Default: |             |
| ParameterKey  | <i>string</i> *<br>Default: |             |

Reply: `ResponseObj``

### 3.128 /AcsNbiService/GroupSendCommandUpgrade

Description: Immediate request for update of all group by rule

Request method: GET

| Parameter     | Value                       | Description |
|---------------|-----------------------------|-------------|
| groupName     | <i>string</i> *<br>Default: |             |
| hardwareClass | <i>string</i> *<br>Default: |             |

Reply: `\ResponseObj\``

### 3.129 /AcsNbiService/GroupSendReboot

Description: Immediate request for reboot of devices in the group

Request method: GET

| Parameter     | Value                       | Description |
|---------------|-----------------------------|-------------|
| groupName     | <i>string</i> *<br>Default: |             |
| hardwareClass | <i>string</i> *<br>Default: |             |

Reply: `\RequestStateResponse\``

### 3.130 /AcsNbiService/GroupSendReconfigure

Description: Immediate request for synchronization of parameters of devices in the group

Request method: GET

| Parameter     | Value                       | Description |
|---------------|-----------------------------|-------------|
| groupName     | <i>string</i> *<br>Default: |             |
| hardwareClass | <i>string</i> *<br>Default: |             |

Reply: `\RequestStateResponse\``

### 3.131 /AcsNbiService/GroupSendResetToDefault

Description: Immediate request for resetting of devices in specified group to the factory default settings

Request method: GET

| Parameter     | Value                       | Description |
|---------------|-----------------------------|-------------|
| groupName     | <i>string</i> *<br>Default: |             |
| hardwareClass | <i>string</i> *<br>Default: |             |

Reply: `\RequestStateResponse\``

### 3.132 /AcsNbiService/GroupSendSetPassword

Description: Immediate request for setting of passwords for all devices in the group

Request method: GET

| Parameter     | Value                       | Description |
|---------------|-----------------------------|-------------|
| groupName     | <i>string</i> *<br>Default: |             |
| hardwareClass | <i>string</i> *<br>Default: |             |

Reply: `\RequestStateResponse\``

### 3.133 /AcsNbiService/GroupSendUploadConfig

Description: Immediate request for uploading of configuration from the devices to the server

Request method: GET

| Parameter     | Value                       | Description |
|---------------|-----------------------------|-------------|
| groupName     | <i>string</i> *<br>Default: |             |
| hardwareClass | <i>string</i> *<br>Default: |             |

Reply: `\RequestStateResponse\``

### 3.134 /AcsNbiService/GroupSetParentGroup

Description: Immediate request for changing of parent group

Request method: GET

| Parameter       | Value                       | Description |
|-----------------|-----------------------------|-------------|
| groupName       | <i>string</i> *<br>Default: |             |
| hardwareClass   | <i>string</i> *<br>Default: |             |
| parentGroupName | <i>string</i> *<br>Default: |             |

Reply: **ResponseObj**

### 3.135 /AcsNbiService/GroupSetPersonalFirmware

Description: Immediate request for setting of update rule for group

Request method: GET

| Parameter     | Value                       | Description |
|---------------|-----------------------------|-------------|
| firmwareRule  | <i>string</i> *<br>Default: |             |
| groupName     | <i>string</i> *<br>Default: |             |
| hardwareClass | <i>string</i> *<br>Default: |             |

Reply: **ResponseObj**

### 3.136 /AcsNbiService/HardwareClassGetList

Description: Request for list of device classes

Request method: GET

Reply: **StringsResponse**

### 3.137 /AcsNbiService/HardwareNamesGetListByHardwareClass

Description: Request for list of device class names for specified device class

Request method: GET

| Parameter     | Value                       | Description |
|---------------|-----------------------------|-------------|
| hardwareClass | <i>string</i> *<br>Default: |             |

Reply: **HardwareNameItemsResponse**

### 3.138 /AcsNbiService/LongQueryGetFileInfoResponse

Description: Request for getting of result of background request in the FileInfoResponse format

Request method: GET

| Parameter  | Value                       | Description |
|------------|-----------------------------|-------------|
| queryIndex | <i>string</i> *<br>Default: |             |

Reply: **FileInfoResponse**

### 3.139 /AcsNbiService/LongQueryGetResponse

Description: Request for getting of result of background request in the ResponseObj format

Request method: GET

| Parameter  | Value                       | Description |
|------------|-----------------------------|-------------|
| queryIndex | <i>string</i> *<br>Default: |             |

Reply: **ResponseObj**

### 3.140 /AcsNbiService/LongQueryGetStringsResponse

Description: Request for getting of result of background request in the StringResponse format

Request method: GET

| Parameter  | Value                       | Description |
|------------|-----------------------------|-------------|
| queryIndex | <i>string</i> *<br>Default: |             |

Reply: **StringsResponse**

### 3.141 /AcsNbiService/LongQueryGetValueStatsResponse

Description: Request for getting of result of background request in the ValueStatResponse format

Request method: GET

| Parameter  | Value                       | Description |
|------------|-----------------------------|-------------|
| queryIndex | <i>string</i> *<br>Default: |             |

Reply: `ValueStatResponse`

### 3.142 /AcsNbiService/ManufacturerOUIGetList

Description: Request for list of manufacturers

Request method: GET

Reply: `StringsResponse`

### 3.143 /AcsNbiService/OptionGetValueStats

Description: Request for getting of option value statistics in format: 'value - amount'

Request method: GET

| Parameter     | Value                       | Description |
|---------------|-----------------------------|-------------|
| hardwareClass | <i>string</i> *<br>Default: |             |
| optionName    | <i>string</i> *<br>Default: |             |

Reply: `ValueStatResponse`

### 3.144 /AcsNbiService/OptionGetValueStatsAddQuery

Description: Background request for getting of statistics by option values

Request method: GET

| Parameter     | Value                       | Description |
|---------------|-----------------------------|-------------|
| hardwareClass | <i>string</i> *<br>Default: |             |
| optionName    | <i>string</i> *<br>Default: |             |

Reply: `LongQueryResponse`

### 3.145 /AcsNbiService/ProductClassGetListByHardwareClass

Description: Request for list of device types for specified device class

Request method: GET

| Parameter       | Value                       | Description |
|-----------------|-----------------------------|-------------|
| hardwareClass   | <i>string</i> *<br>Default: |             |
| manufacturerOUI | <i>string</i> *<br>Default: |             |

Reply: `StringsResponse`

### 3.146 /AcsNbiService/ProductClassGetListByOUI

Description: Request for list of device types for specified manufacturer

Request method: GET

| Parameter       | Value                       | Description |
|-----------------|-----------------------------|-------------|
| manufacturerOUI | <i>string</i> *<br>Default: |             |

Reply: `StringsResponse`

### 3.147 /AcsNbiService/ProfileAdd

Description: Request for profile addition

Request method: GET

| Parameter          | Value                       | Description |
|--------------------|-----------------------------|-------------|
| hardwareClass      | <i>string</i> *<br>Default: |             |
| informInterval     | <i>string</i> *<br>Default: |             |
| profileDescription | <i>string</i> *<br>Default: |             |
| profileName        | <i>string</i> *<br>Default: |             |
| sriptName          | <i>string</i> *<br>Default: |             |

Reply: `\ResponseObj\``

### 3.148 /AcsNbiService/ProfileAddDevices

Description: Request for device addition to the profile

Request method: POST

| Parameter     | Value                       | Description |
|---------------|-----------------------------|-------------|
| hardwareClass | <i>string</i> *<br>Default: |             |
| profileName   | <i>string</i> *<br>Default: |             |

Request body: `\StringArrayWrapper\``

Reply: `\ResponseObj\``

### 3.149 /AcsNbiService/ProfileAddDevicesByFilter

Description: Request for device addition to the profile based on filter

Request method: POST

| Parameter     | Value                       | Description |
|---------------|-----------------------------|-------------|
| hardwareClass | <i>string</i> *<br>Default: |             |
| profileName   | <i>string</i> *<br>Default: |             |

Request body: `\CpePageSettingsAndStringArrayWrapper\``

Reply: `\ResponseObj\``

### 3.150 /AcsNbiService/ProfileAddDevicesByFilterAddQuery

Description: Background request for device addition to the profile based on filter

Request method: POST

| Parameter     | Value                       | Description |
|---------------|-----------------------------|-------------|
| hardwareClass | <i>string</i> *<br>Default: |             |
| profileName   | <i>string</i> *<br>Default: |             |

Request body: `\CpePageSettingsAndStringArrayWrapper\``

Reply: `\LongQueryResponse\``

### 3.151 /AcsNbiService/ProfileDelete

Description: Request for profile deletion

Request method: GET

| Parameter     | Value                       | Description |
|---------------|-----------------------------|-------------|
| forceDelete   | <i>string</i> *<br>Default: |             |
| hardwareClass | <i>string</i> *<br>Default: |             |
| profileName   | <i>string</i> *<br>Default: |             |

Reply: `\ResponseObj\``



### 3.152 /AcsNbiService/ProfileDeleteAllProperties

Description: Request for all parameters deletion from the profile

Request method: GET

| Parameter     | Value                       | Description |
|---------------|-----------------------------|-------------|
| hardwareClass | <i>string</i> *<br>Default: |             |
| profileName   | <i>string</i> *<br>Default: |             |

Reply: `\ResponseObj\`

### 3.153 /AcsNbiService/ProfileDeleteProperty

Description: Request for parameter deletion from the profile

Request method: GET

| Parameter     | Value                       | Description |
|---------------|-----------------------------|-------------|
| hardwareClass | <i>string</i> *<br>Default: |             |
| profileName   | <i>string</i> *<br>Default: |             |
| propertyName  | <i>string</i> *<br>Default: |             |

Reply: `\ResponseObj\`

### 3.154 /AcsNbiService/ProfileEdit

Description: Request for profile edition

Request method: GET

| Parameter          | Value                       | Description |
|--------------------|-----------------------------|-------------|
| hardwareClass      | <i>string</i> *<br>Default: |             |
| informInterval     | <i>string</i> *<br>Default: |             |
| profileDescription | <i>string</i> *<br>Default: |             |
| profileName        | <i>string</i> *<br>Default: |             |
| sriptName          | <i>string</i> *<br>Default: |             |

Reply: `\ResponseObj\`

### 3.155 /AcsNbiService/ProfileGetByName

Description: Request for profile by name

Request method: GET

| Parameter     | Value                       | Description |
|---------------|-----------------------------|-------------|
| hardwareClass | <i>string</i> *<br>Default: |             |
| profileName   | <i>string</i> *<br>Default: |             |

Reply: `\ProfileItemsResponse\`

### 3.156 /AcsNbiService/ProfileGetChangeCounter

Description: Request for profile change counter

Request method: GET

Reply: `\LongResponse\`

### 3.157 /AcsNbiService/ProfileGetListByHardwareClass

Description: Request for list of profiles by device class

Request method: GET

| Parameter     | Value                       | Description |
|---------------|-----------------------------|-------------|
| hardwareClass | <i>string</i> *<br>Default: |             |

Reply: `\ProfileItemsResponse\`

### 3.158 /AcsNbiService/ProfileGetProperty

Description: Request for profile parameter

Request method: GET

| Parameter     | Value                       | Description |
|---------------|-----------------------------|-------------|
| hardwareClass | <i>string</i> *<br>Default: |             |
| profileName   | <i>string</i> *<br>Default: |             |

Reply: `\ParamPairResponse\``

### 3.159 /AcsNbiService/ProfilePropertyGetChangeCounter

Description: Request for parameter changes counter

Request method: GET

Reply: `\LongResponse\``

### 3.160 /AcsNbiService/ProfileSendRefreshCache

Description: Request for updating of profile cash in ACS

Request method: GET

| Parameter     | Value                       | Description |
|---------------|-----------------------------|-------------|
| hardwareClass | <i>string</i> *<br>Default: |             |
| profileName   | <i>string</i> *<br>Default: |             |

Reply: `\ResponseObj\``

### 3.161 /AcsNbiService/ProfileSetBaseProfile

Description: Request for setting of parental profile

Request method: GET

| Parameter       | Value                       | Description |
|-----------------|-----------------------------|-------------|
| baseProfileName | <i>string</i> *<br>Default: |             |
| hardwareClass   | <i>string</i> *<br>Default: |             |
| profileName     | <i>string</i> *<br>Default: |             |

Reply: `\ResponseObj\``

### 3.162 /AcsNbiService/ProfileSetDevices

Description: Request for setting of list of devices for the profile, reassign the rest to the profile '0'

Request method: POST

| Parameter     | Value                       | Description |
|---------------|-----------------------------|-------------|
| hardwareClass | <i>string</i> *<br>Default: |             |
| profileName   | <i>string</i> *<br>Default: |             |

Request body: `\StringArrayWrapper\``

Reply: `\ResponseObj\``

### 3.163 /AcsNbiService/ProfileSetProperty

Description: Request for parameter addition to the profile

Request method: GET

| Parameter     | Value                       | Description |
|---------------|-----------------------------|-------------|
| hardwareClass | <i>string</i> *<br>Default: |             |
| profileName   | <i>string</i> *<br>Default: |             |
| propertyName  | <i>string</i> *<br>Default: |             |
| propertyValue | <i>string</i> *<br>Default: |             |

Reply: `\ResponseObj\``

### 3.164 /AcsNbiService/ProfileSetPropertyList

Description: Request for setting the list of profile parameters

Request method: POST

| Parameter     | Value                       | Description |
|---------------|-----------------------------|-------------|
| hardwareClass | <i>string</i> *<br>Default: |             |
| profileName   | <i>string</i> *<br>Default: |             |

Request body: `\ParamPairArrayWrapper\``

Reply: `\ResponseObj\``

### 3.165 /AcsNbiService/ServiceAdd

Description: Request for service addition

Request method: GET

| Parameter          | Value                       | Description |
|--------------------|-----------------------------|-------------|
| hardwareClass      | <i>string</i> *<br>Default: |             |
| serviceDescription | <i>string</i> *<br>Default: |             |
| serviceName        | <i>string</i> *<br>Default: |             |

### 3.166 /AcsNbiService/ServiceDelete

Description: Request for service deletion

Request method: GET

| Parameter     | Value                       | Description |
|---------------|-----------------------------|-------------|
| hardwareClass | <i>string</i> *<br>Default: |             |
| serviceName   | <i>string</i> *<br>Default: |             |

Reply: `\ResponseObj\``

### 3.167 /AcsNbiService/ServiceDeleteAllProperties

Description: Request for all service parameters deletion

Request method: GET

| Parameter     | Value                       | Description |
|---------------|-----------------------------|-------------|
| hardwareClass | <i>string</i> *<br>Default: |             |
| serviceName   | <i>string</i> *<br>Default: |             |

Reply: `\ResponseObj\``

### 3.168 /AcsNbiService/ServiceDeleteProperty

Description: Request for service parameters deletion

Request method: GET

| Parameter     | Value                       | Description |
|---------------|-----------------------------|-------------|
| hardwareClass | <i>string</i> *<br>Default: |             |
| propertyName  | <i>string</i> *<br>Default: |             |
| serviceName   | <i>string</i> *<br>Default: |             |

Reply: `\ResponseObj\``

### 3.169 /AcsNbiService/ServiceGetProperty

Description: Request for getting of service parameter

Request method: GET

| Parameter     | Value                       | Description |
|---------------|-----------------------------|-------------|
| hardwareClass | <i>string</i> *<br>Default: |             |
| serviceName   | <i>string</i> *<br>Default: |             |

Reply: `\SvcParamPairResponse\``

### 3.170 /AcsNbiService/ServiceGetPropertyList

Description: Request for the list of service parameters

Request method: POST

| Parameter     | Value                       | Description |
|---------------|-----------------------------|-------------|
| hardwareClass | <i>string</i> *<br>Default: |             |
| serviceName   | <i>string</i> *<br>Default: |             |

Request body: ``StringArrayWrapper``

Reply: ``SvcParamPairResponse``

### 3.171 /AcsNbiService/ServiceSetProperty

Description: Request for setting of service parameter

Request method: GET

| Parameter     | Value                       | Description |
|---------------|-----------------------------|-------------|
| hardwareClass | <i>string</i> *<br>Default: |             |
| isParam       | <i>string</i> *<br>Default: |             |
| propertyName  | <i>string</i> *<br>Default: |             |
| propertyValue | <i>string</i> *<br>Default: |             |
| serviceName   | <i>string</i> *<br>Default: |             |

Reply: ``ResponseObj``

### 3.172 /AcsNbiService/ServiceSetPropertyList

Description: Request for setting of list of service parameters

Request method: POST

| Parameter     | Value                       | Description |
|---------------|-----------------------------|-------------|
| hardwareClass | <i>string</i> *<br>Default: |             |
| serviceName   | <i>string</i> *<br>Default: |             |

Request body: ``ServiceParamPairArrayWrapper``

Reply: ``ResponseObj``

---

## 4 STRUCTURE DESCRIPTION

### \* \_\_CpeItem\_\_

```
{
authType: integer (int32)
comments: string
conRequestPassword: string
conRequestUserName: string
configName: string
connectTime: string
currentSoftware: string
customerId: string
hardwareClass: string
hwId: integer (int64)
hwcId: integer (int32)
id: integer (int64)
location: string
macAddress: string
manufacturerOUI: string
password: string
personalFwId: integer (int64)
personalFwName: string
productClass: string
profileId: integer (int64)
profileName: string
requestId: integer (int64)
serialNumber: string
sfwUpdRes: string
sfwUpdTime: string
subscriber: string
url: string
username: string
}
```

### \* \_\_CpeItemResponse\_\_

```
{
cpeItem: CpeItem
error: boolean
errorCode: string
info: string
licenseError: boolean
message: string
queryInProgress: boolean
resultCode: string
}
```

### \* \_\_CpeOptionInfo\_\_

```
{
cpeId: integer (int64)
name: string
title: string
trName: string
values: [OptionValue]
}
```

**\* \_\_CpeOptionsResponse\_\_**

```
{
error: boolean
errorCode: string
info: string
licenseError: boolean
message: string
optionItems: [CpeOptionInfo]
queryInProgress: boolean
resultCode: string
}
```

**\* \_\_CpePageSettings\_\_**

```
{
hardwareClass: string
limit: integer (int32)
offset: integer (int32)
profileIds: string
searchClause: string
sortField: string
sortType: string
}
```

**\* \_\_CpePageSettingsAndStringArrayWrapper\_\_**

```
{
cpePageSettings: CpePageSettings
strings: [string]
}
```

**\* \_\_FileInfo\_\_**

```
{
lastModified: string
name: string
profileNames: [string]
serialNumbers: [string]
size: integer (int64)
version: string
}
```

---

\* **FileInfoResponse**

```
{
error: boolean
errorCode: string
fileInfoItems: [FileInfo]
info: string
licenseError: boolean
message: string
queryInProgress: boolean
resultCode: string
}
```

\* **FirmwareRuleItem**

```
{
downgradeVersions: boolean
enable: boolean
fileName: string
fileSize: integer (int64)
hardwarePairs: [HardwarePair]
hwId: integer (int32)
id: integer (int64)
name: string
profileNames: [string]
safeMode: boolean
serialNumbers: [string]
url: string
version: string
}
```

\* **FirmwareRulesResponse**

```
{
error: boolean
errorCode: string
firmwareRuleItems: [FirmwareRuleItem]
info: string
licenseError: boolean
message: string
queryInProgress: boolean
resultCode: string
}
```

\* **GroupItemsResponse**

```
{
error: boolean
errorCode: string
groupItems: [SimpleGroupItem]
info: string
}
```

```
licenseError: boolean  
message: string  
queryInProgress: boolean  
resultCode: string  
}
```

\* **HardwareNameItem**

```
{  
hwcId: integer (int32)  
manufacturerOUI: string  
productClass: string  
}
```

\* **HardwareNameItemsResponse**

```
{  
error: boolean  
errorCode: string  
hardwareNameItems: [HardwareNameItem]  
info: string  
licenseError: boolean  
message: string  
queryInProgress: boolean  
resultCode: string  
}
```

\* **HardwarePair**

```
{  
manufacturerOUI: string  
productClass: string  
}
```

\* **HardwarePairArrayWrapper**

```
{  
hardwarePairs: [HardwarePair]  
}
```

\* **IntResponse**

```
{  
error: boolean  
errorCode: string  
info: string  
licenseError: boolean  
message: string  
queryInProgress: boolean  
resultCode: string  
value: integer (int32)  
}
```



---

}

\* **\_\_IpPingItem\_\_**

```
{
averRespTime: integer (int32)
blockSize: integer (int32)
cmdId: integer (int64)
cpeId: integer (int64)
diagState: string
dscp: integer (int32)
failCnt: integer (int32)
hostIp: string
interfaceName: string
maxRespTime: integer (int32)
minRespTime: integer (int32)
numOfReps: integer (int32)
owner: integer (int32)
succCnt: integer (int32)
timeEnd: string
timeStart: string
timeout: integer (int32)
user: string
}
```

\* **\_\_IpPingItemsResponse\_\_**

```
{
error: boolean
errorCode: string
info: string
ipPingItems: [IpPingItem]
licenseError: boolean
message: string
queryInProgress: boolean
resultCode: string
}
```

\* **\_\_LongArrayAndStringArrayWrapper\_\_**

```
{
longs: [integer (int64)]
strings: [string]
}
```

\* **\_\_LongArrayWrapper\_\_**

```
{
longs: [integer (int64)]
}
```

\* \_\_LongQueryResponse\_\_

```
{
emptyResult: boolean
error: boolean
errorCode: string
info: string
licenseError: boolean
message: string
queryInProgress: boolean
queryIndex: integer (int32)
queryNotRegistered: boolean
resultCode: string
}
```

\* \_\_LongResponse\_\_

```
{
error: boolean
errorCode: string
info: string
licenseError: boolean
message: string
queryInProgress: boolean
resultCode: string
value: integer (int64)
}
```

\* \_\_OptionNumParam\_\_

```
{
name: string
title: string
trName: string
value: integer (int64)
}
```

\* \_\_OptionNumParamArrayWrapper\_\_

```
{
optionNumParams: [OptionNumParam]
}
```

\* \_\_OptionStrParam\_\_

```
{
name: string
title: string
trName: string
value: string
}
```

\* **\_\_OptionStrParamArrayWrapper\_\_**

```
{  
optionStrParams: [OptionStrParam]  
}
```

\* **\_\_OptionValue\_\_**

```
{  
type: string  
value: string  
}
```

\* **\_\_ParamPair\_\_**

```
{  
name: string  
value: string  
}
```

\* **\_\_ParamPairArrayWrapper\_\_**

```
{  
paramPairs: [ParamPair]  
}
```

\* **\_\_ParamPairResponce\_\_**

```
{  
error: boolean  
errorCode: string  
info: string  
licenseError: boolean  
message: string  
paramItems: [ParamPair]  
queryInProgress: boolean  
resultCode: string  
}
```

\* **\_\_ProfileItem\_\_**

```
{  
baseId: integer (int64)  
baseName: string  
description: string  
hwcId: integer (int32)  
id: integer (int64)  
informInterval: integer (int32)  
name: string  
scriptName: string  
}
```

```
versions: [string]
}
```

**\* \_\_ProfileItemsResponse\_\_**

```
{
error: boolean
errorCode: string
info: string
licenseError: boolean
message: string
profileItems: [ProfileItem]
queryInProgress: boolean
resultCode: string
}
```

**\* \_\_RequestStateResponse\_\_**

```
{
cmdState: integer (int32)
doneState: boolean
error: boolean
errorCode: string
errorState: boolean
InProgressState: boolean
info: string
licenseError: boolean
message: string
newState: boolean
queryInProgress: boolean
requestId: integer (int64)
resultCode: string
}
```

**\* \_\_ResponseObj\_\_**

```
{
error: boolean
errorCode: string
info: string
licenseError: boolean
message: string
queryInProgress: boolean
resultCode: string
}
```

**\* \_\_ScheduleResponse\_\_**

```
{
error: boolean
errorCode: string
}
```

```
info: string
licenseError: boolean
message: string
queryInProgress: boolean
resultCode: string
scheduleItems: [SimpleSchedule]
}
```

\* [\\_\\_SearchParam\\_\\_](#)

```
{
field: string
operator: string
value: string
}
```

\* [\\_\\_SearchParamArrayWrapper\\_\\_](#)

```
{
searchParams: [SearchParam]
}
```

\* [\\_\\_ServiceItem\\_\\_](#)

```
{
description: string
hwId: integer (int32)
id: integer (int64)
instance: integer (int32)
name: string
}
```

\* [\\_\\_ServiceItemsResponse\\_\\_](#)

```
{
error: boolean
errorCode: string
info: string
licenseError: boolean
message: string
queryInProgress: boolean
resultCode: string
serviceItems: [ServiceItem]
}
```

\* [\\_\\_ServiceParamPair\\_\\_](#)

```
{
isParam: integer (int32)
name: string
value: string
}
```

```
}
```

**\* \_\_ServiceParamPairArrayWrapper\_\_**

```
{  
serviceParamPairs: [ServiceParamPair]  
}
```

**\* \_\_SimpleCpe\_\_**

```
{  
comments: string  
connectTime: string  
currentSoftware: string  
hardwareClass: string  
hwcId: integer (int32)  
id: integer (int64)  
macAddress: string  
manufacturerOUI: string  
productClass: string  
profileId: integer (int64)  
profileName: string  
serialNumber: string  
url: string  
}
```

**\* \_\_SimpleCpeResponse\_\_**

```
{  
cpeItems: [SimpleCpe]  
error: boolean  
errorCode: string  
info: string  
licenseError: boolean  
message: string  
queryInProgress: boolean  
resultCode: string  
}
```

**\* \_\_SimpleGroupItem\_\_**

```
{  
hardwareClass: string  
name: string  
parent: string  
}
```

**\* \_\_SimpleSchedule\_\_**

```
{  
hwcId: integer (int32)
```

```
periodEnd: string
periodStart: string
schId: integer (int32)
timeEnd: string
timeStart: string
weekDayEnd: integer (int32)
weekDayStart: integer (int32)
}
```

#### \* \_\_StringArrayWrapper\_\_

```
{
strings: [string]
}
```

#### \* \_\_StringsResponse\_\_

```
{
error: boolean
errorCode: string
info: string
licenseError: boolean
message: string
queryInProgress: boolean
resultCode: string
strings: [string]
}
```

#### \* \_\_SubscriptionItem\_\_

```
{
event: string
filters: [ParamPair]
}
```

#### \* \_\_SubscriptionItemsResponse\_\_

```
{
error: boolean
errorCode: string
info: string
licenseError: boolean
message: string
queryInProgress: boolean
resultCode: string
subscriptionItems: [SubscriptionItem]
}
```

#### \* \_\_SvcParamPairResponse\_\_

```
{
```

```
error: boolean
errorCode: string
info: string
licenseError: boolean
message: string
paramItems: [ServiceParamPair]
queryInProgress: boolean
resultCode: string
}
```

**\* \_\_ValueStat\_\_**

```
{
count: integer (int32)
value: string
}
```

**\* \_\_ValueStatResponse\_\_**

```
{
error: boolean
errorCode: string
info: string
licenseError: boolean
message: string
queryInProgress: boolean
resultCode: string
valueStats: [ValueStat]
}
```



## TECHNICAL SUPPORT

Contact Eltex Service Centre to receive technical support regarding our products:

29v Okruzhnaya st., Novosibirsk, Russian Federation, 630020

Phone number:

+7(383) 274-47-87

+7(383) 272-83-31

E-mail: [techsupp@eltex-co.ru](mailto:techsupp@eltex-co.ru)

Visit Eltex official website to get the relevant technical documentation and software, benefit from our knowledge base, send us online request or consult a Service Centre Specialist in our technical forum.

<http://www.eltex-co.com/>

<http://eltex-co.com/support/downloads/>

<http://eltex-co.ru/forum/index.php>

<https://eltex-co.com/support/knowledge/>